

LINEEYE

OPTIONAL SOFTWARE
MULTI PROTOCOL ANALYZER

PC Link Software
LE-PC300R

Instruction Manual

Input the serial number on installation of this product.

You can see the serial number written on the package box and
Registration Card.

The actual display or manner of operation may differ from that of the
instruction manual because of the improvement of the product and so
on. Please refer to the online help also for the use of the software.

<Ver. 8>

Contents

Chapter 1	Before Using the Product	1
Chapter 2	Introduction	2
	General Description	2
	Unpacking	2
Chapter 3	Before Start-up	2
	USB Driver Installation	2
	Installation Guide	3
	Uninstallation Guide	3
	Analyzer Setting	4
Chapter 4	Data Window	5
	Data Window of PC link software LE-PC300R	5
Chapter 5	Environment Setting	6
	Remote Setting	6
Chapter 6	Remote Monitor	14
	Connection	14
	Analyzer Setting	14
	Simulation Data Setting	15
	Max speed when remote monitoring	16
	Start Measurement	16
	Stop Measurement	16
	Remote Monitor Screen	17
	Read the Measurement Data	18
	Search Data	18
Chapter 7	Bit Error Rate Test (BERT)	19
	Start Measurement	19
Chapter 8	Key Emulation	20
	Run Key Emulation	20
	Capture the Screen Image	20
Chapter 9	Text Conversion	21
	Text Conversion Function Setting	21
	Start Text Conversion	25
Chapter 10	Waveform Monitor Data	26
Chapter 11	Connecting Multiple Analyzers	27
	Add the Remote Setting	27
	Open the Data Window	28
	Delete the Remote Setting	28
	Operate Setting When Starting	28
	Startup Options	29
Chapter 12	Specification	30

Chapter 1 Before Using the Product

Software License Agreement

LINEEYE CO., LTD (LINEEYE) grants you to use the software program and the documents under the terms of this license. And you are consenting to be bound by and are becoming a party to this agreement.

To use the software, you need to agree to this license agreement.

1. Copyright

LINEEYE holds the copyright on this software.

2. Grant of License

LINEEYE grants for you to use this software on only one computer by agreeing this license agreement. Therefore, you shall not rent, lease and loan to a third party.

3. Copy, Analysis, Modification

This software must not be reproduced, analyzed or modified in any form unless prescribed in the manual.

4. Upgrade

This software may be upgraded without any advance notice because of technical progress of hardware or software. LINEEYE provides the upgraded software with the upgrade fee. For upgrade, only licensed user can have upgrades.

5. Limitation of Liability

In no event shall LINEEYE or its licensors be liable for any loss of business or profits, or for any direct, indirect, incidental or consequential damages arising from products of this software or the related software. Besides LINEEYE shall not be liable damages arising from the equipment.

6. General

If any provision of the agreement is held invalid, such provision shall be removed from this license agreement.

7. Support

LINEEYE supports functions, operation and only the problem on this software.

8. Notice

Any matter not specified in this agreement will be governed by and constructed in accordance with copy right law and related laws.

LINEEYE CO., LTD.

Chapter 2 Introduction

Thank you for your purchase of LINEEYE's PC link software.

- To use it correctly, you are advised to read and understand this together with the instruction manual for analyzer thoroughly.
- Keep this instruction manual.

General Description

LE-PC300R is software to remotely control the protocol analyzer from a PC and utilize the measurement data on the PC.

Applicable Analyzer

LE-3500XR(V2)/LE-2500XR(V2)/LE-3500XR/LE-2500XR/LE-3500R/LE-2500R/
LE-1500R/LE-110SA/LE-120SA/ LE-3500/LE-2500/LE-1500

Unpacking

When you unpack the product, make sure of the following:

(The light edition is included in the CD-ROM attached to the analyzer.)

- | | |
|---|---|
| <input type="checkbox"/> CD-ROM (software) | 1 |
| <input type="checkbox"/> Instruction Manual (This book) | 1 |
| <input type="checkbox"/> Warranty | 1 |

Please contact your LINEEYE distributors if you find any damage to the product caused by transportation, or if there are accessories lacking.

Chapter 3 Before Start-up

USB Driver Installation

When using by USB connection, you need to install the USB driver on the PC.

* Driver installation is not required for LE-3500XR(V2)/LE-2500XR(V2).

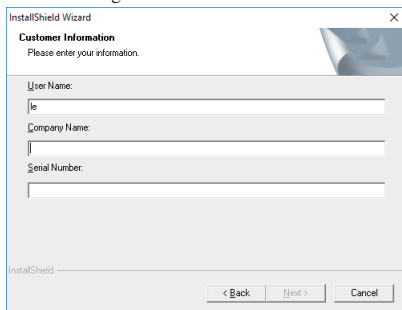
1. Do not connect the analyzer to the USB port of PC before the driver installation.
2. Download the USB driver compatible with the analyzer from the LINEEYE website, Unzip to a proper folder. (The driver is also included in the CD attached to the product.)

Supported OS are Windows 11/10.


3. Execute setup.exe in the folder.
4. Follow the instructions on the screen to proceed the installation. If the "User account control" or "Windows Security" window is displayed, click "Yes" or "Install" to proceed.
5. After the installation is complete, connect the analyzer with a USB cable. After the PC recognize the USB connection a connection message will appear in the task tray at the bottom right.

Installation Guide



1. Execute “setup.exe” in the attached CD.
If the PC (to which you want to install the software) does not have a CD-ROM drive, copy it to a storage device such as USB flash using another PC which has a CD-ROM drive to bring it to the PC and execute it.
2. First, click “Yes” in the “User Account Control” display.
3. When the Windows firewall displays a message such as “Windows protected your PC”, click “Detail”-“Run” to run the program.
4. Even if the virus security software displays a message that blocks this software, click the option to run the software such as “Run this program” to cancel the blocking.
5. When the installer starts up, proceed according to the instructions on the screen.
You will be prompted for the serial number during installation. Please enter the serial number of this software written on the attached Warranty card.



The screenshot shows a window titled "InstallShield Wizard" with a close button in the top right corner. Below the title bar, it says "Customer Information" and "Please enter your information." There are three input fields: "User Name:" with the text "le" entered, "Company Name:" which is empty, and "Serial Number:" which is empty. At the bottom of the dialog, there are three buttons: "< Back", "Next >", and "Cancel". The "InstallShield" logo is visible in the bottom left corner of the dialog area.

-  For the light version “LE-PC300R (LITE)” which you can download free of charge from the LINE-EYE website, the serial number will be automatically entered as “LITE”.
6. When the installation completion message is displayed, click “Finish”.

Uninstallation Guide

1. Open “Uninstall or change a program” (or “Program and Features”) from the control panel. (Or right-click on “LE-PC300R” in the start menu and select “uninstall”).
2. Select “LE-PC300R” from the list and execute “Uninstall and change”.
3. First, click “Yes” in the “User Accounts” display.
4. Click “OK” at the deletion confirmation display.
 When the light version "LE-PC300R (LITE)" is already installed in the PC, uninstall the light version before installing the full version.
 When updating the product version (full edition), you can install the new version without uninstalling the old version. By doing so, the product serial number etc. will be carried over.

Analyzer Setting

<USB or Serial connection>

- 1) Connect your analyzer to the target devices you wish to measure.
- 2) Serial connection: Connect your analyzer and a PC by the included cable (LE2-8V).
USB connection: Connect by the USB cable.
- 3) Set the AUX port of your analyzer as follows if you are using the serial connection. (You do not need to set the AUX port if you are using the USB connection.)
(Fixed length of data is 8 bit.)

<Example>

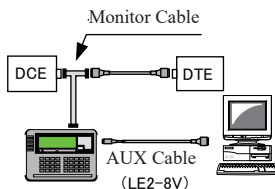
Usually, set transmission speed to 115200bps.

Set data length of 8-bit.

Recommended that parity be set to NONE.

Set X-CONT (flow control) to OFF.

AUX COND		*SELECT*	
SPEED	: 115200	0	9600
CHAR BIT	: 8	1	19200
PARITY	: NONE	2	38400
X-CONT	: OFF	3	57600
		4	115200
		5	230400



Attention

- * Make sure to set you analyzer before starting LE-PC300R.
- * Never turn off the power of your analyzer while connecting to the PC.
- * Do not use the USB port while using the serial port of the analyzer
- * Set the electric power saving mode OFF on the PC in order to maintain the connection of the PC link.

< Wi-Fi connection > (Only the analyzers that support Wi-Fi connection)

- ① Connect the analyzer with the communication line to be measured.
- ② Select the wireless LAN mode of the analyzer from the station mode “STA” (it connects via Wi-Fi access point) or access point mode “AP” (the analyzer itself becomes wireless access point).
- ③ Configure the items for the connection.

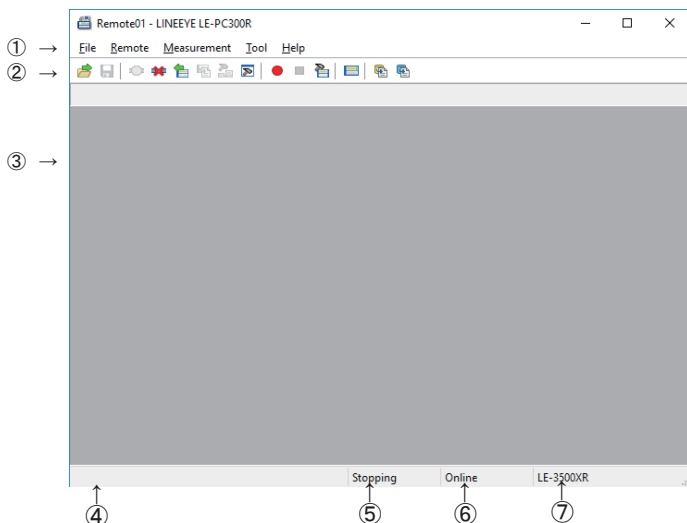
For details, please refer to the analyzer’s instruction manual.

Data Window of PC link software LE-PC300R

■Starting the PC link software LE-PC300R.

Start "LE-PC300R" from the "Start" of Windows.

Usually, the following display will appear



① Menu

Can perform various operations.

② Tool Bar

Can perform various operations.

③ Data display part

Displays the measured data.

④ Data position display part

Displays the data position in the Data display part and the current file name. The number of data loss is displayed while remote monitoring.

⑤ Various state display part

Displays such as the measurement state.

⑥ Connection state display part

Displays the remote connection state between LE-PC300G and your analyzer.

⑦ Model name display part

Displays the model name of your analyzer being set at the time of offline, and one of your analyzer being connected at the time of online.

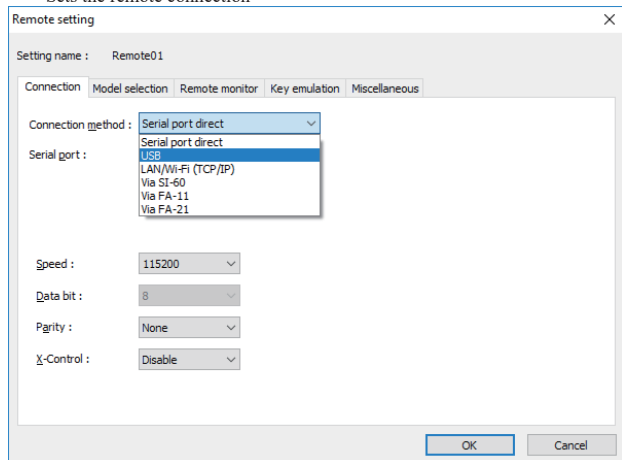
Remote Setting

Click  on the tool bar of the data window (or “Remote Setting” of “Remote” menu) to set the remote setting.

The remote setting consists of “Connection”, “Model selection”, “Key emulation” and “Miscellaneous”.

■ Connection

Sets the remote connection



Connection Method

“Serial port direct” : Connect via serial port of the PC or use the USB-Serial converter (LE-US232B).

“USB” : Connect via USB port.

“LAN/Wi-Fi (TCP/IP)” : Connect via Wi-Fi *1

“Via SI-60” : Connect via SI-60 *2

“Via FA-11” : Connect via FA-11 *3

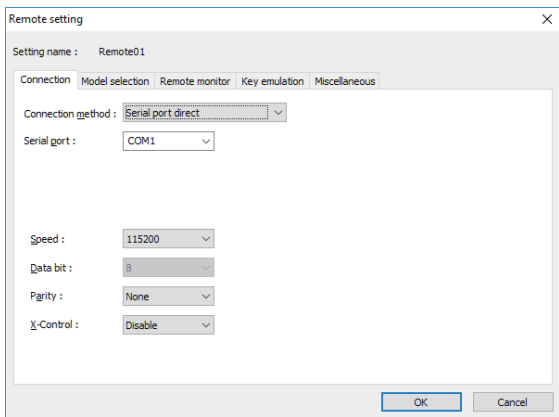
“Via FA-21” : Connect via FA-21 *3

*1 It is necessary that the PC is connected to the Wi-Fi access point to which the analyzer is connected via the network, or the PC can be connected by Wi-Fi to the analyzer’s own wireless access point.

*2 You can use SI-60 or SI-60F. To use SI-60, AUX Cable for DSUB 25pin “LE2-8C” is required. For more detail of the SI-60/SI-60F setting, read the instructions manual included in the converter.

*3 FA-11 and FA-21 are the products of Century Systems Co., Ltd.
(LINEEYE does not support except SI-60 and SI-60F.)

<Serial port direct>



“Serial Port”

Selects the serial port of the PC to be connected. Enter the port name directly or you can select from the drop down list in the range of COM1 - COM9.

“Speed”

Set the communication speed in conformity with that of the AUX port of the analyzer.

“Data bit number”

Data bit number is fixed to 8 and cannot be changed. Set 8 to the data bit number of AUX port setting of the analyzer.

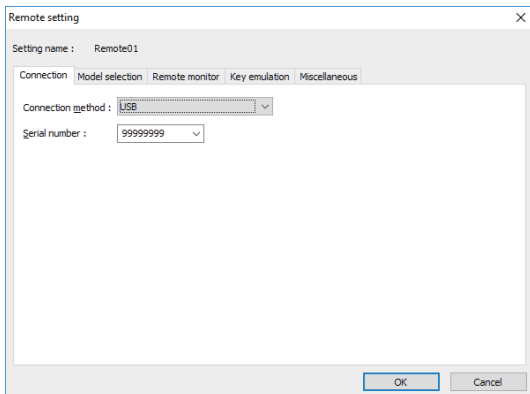
“Parity”

Set the parity of the communication data. Normally set None.

“X-Control”

Sets whether to use the Xon / off flow control method. Normally, set it to "None".

<USB>

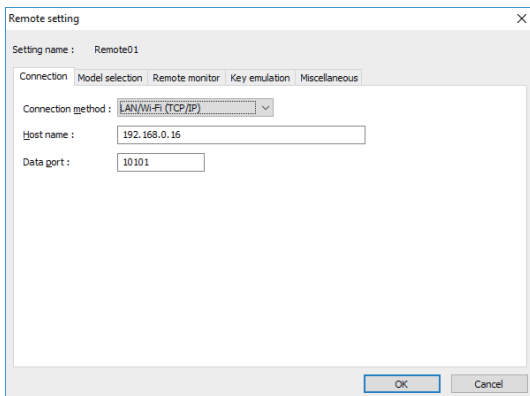


“Serial number” (USB)

Set the serial number of the analyzer to be controlled.

You can select it from the drop down list when the analyzer is connected.

<Wi-Fi>



“Host name”

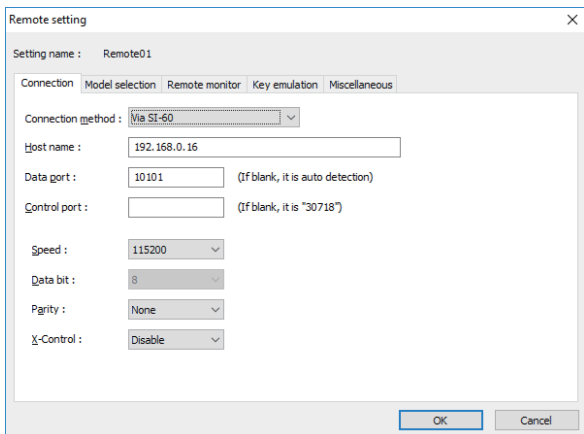
Set the IP address of the analyzer.

“Data Port”

Set the port number for the send/receive of the measured data. Set the same port number set to the analyzer.

You can confirm the IP address and the port number by pressing [ENTER] at the setting display of analyzer.

<Via SI-60>



“Host name”

Set the IP address of the SI-60.

“Data Port”

Set the port number for the send/receive of serial data. When it is blank, the value is automatically acquired, thus normally leave it blank. When the port number is changed by a router or firewall, you need to configure this item.

“Control port”

Set the control port number of the SI-60. Normally leave it blank. When the port number is changed by a router or firewall, you need to configure this item.

“Speed”

Set the speed in conformity with that of AUX setting of the analyzer.

“Data bit”

Data bit number is fixed to 8 and cannot be changed. Set 8 to the data bit number of AUX port setting of the analyzer.

“Parity”

Set the parity of the communication data. Normally set None.

“X-Control”

Sets whether to use the Xon / off flow control method. Normally, set it to "None".

<Via FA-11>

Set as same as the case of SI-60.

Besides that, the command port (of FA11) should be set.

<Via FA-21>

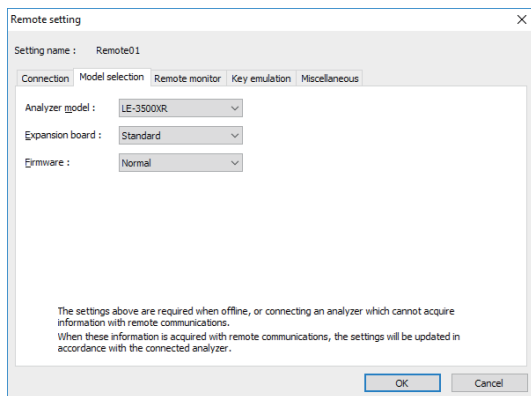
Set as same as the case of FA-11.

Besides that, the serial port (which port of the two ports of FA21 is used) should be set.

■Model selection

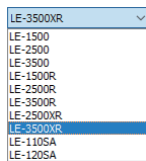
Sets your analyzer settings. Mainly, it is used at the time of offline. However in the case of that there is information which is not received by remote communication at the time of online, it is used as it is set. In addition, if the information is received by remote communication, these settings are automatically changed.

This is an example of LE-3500XR setting. Other models are almost same as this.



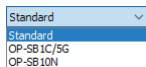
“Analyzer model”

Selects the model name of the target analyzer.



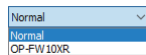
“Expansion board”

Selects the expansion board which is equipped with a target analyzer.



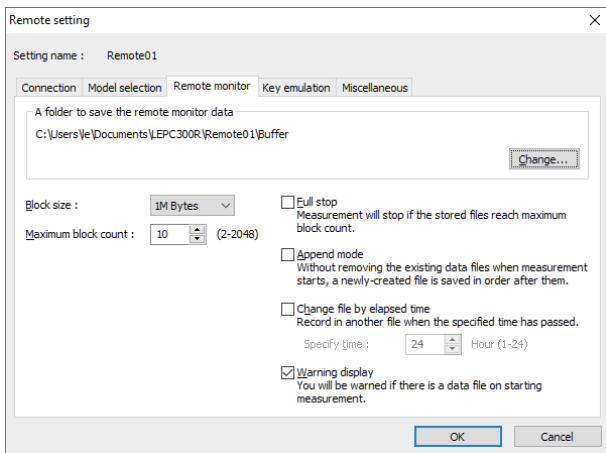
“Firmware”

Sets when you use optional firmware on the target analyzer.



■ Remote monitor

Sets the remote monitor



A folder to save the remote monitor data

This folder is to save data received by your analyzer for the remote monitor function.

To change the setting, click “Change” button. Then the window to select a folder appears. Select the proper folder and click “OK” button. The file name of saving data is started from “00000000.DT” in numerical order.

※ Recommends to specify an exclusive folder.

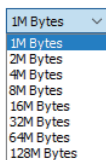
※ Specify a drive which has enough capacity.

(When it does not have enough capacity, the PC may not operate correctly.)

“Block size”

Sets the data capacity per file. You can select from “1M Byte”, “2M Byte”,

“4M Byte”, “8M Byte”, “16M Byte”, “32M Byte”, “64M Byte”, or “128M Byte”.



“Maximum block count”

Sets the maximum block count of a file to save. You can set from 2 to 2048. When the number of the data file is over this setting, the data file with a small number file is deleted.



“Full stop”

If the stored files reach to the maximum block count, measurement will automatically stop.

“Append mode”

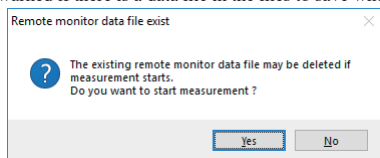
When measurement starts, a newly-created file is saved in the order after the existing files. If the numbers of the whole data files are over the maximum block count setting, a data file with a small number file (includes data files which were saved on the former measurement) is deleted even in the append mode.

“Change file by elapsed time”

Create a new data file when the specified time has been elapsed, even if the size of the former data file has not reached the specified Block size. However, if the data file under recording has not recorded any data, the new data file will not be created.

“Warning display”

You will be warned if there is a data file in the files to save when starting measurement.

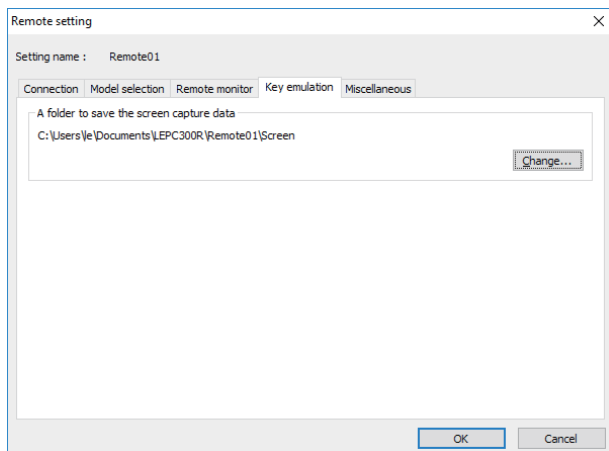


■“Key emulation”

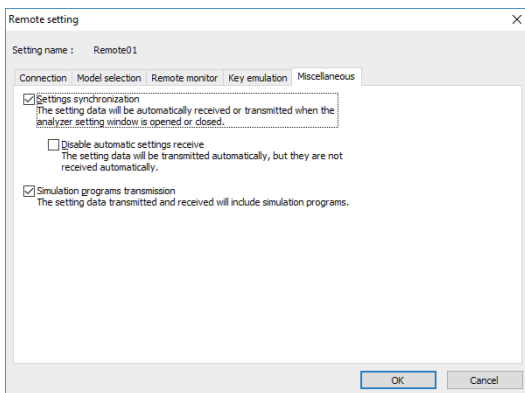
Sets the key emulation.

A folder to save the screen capture data

A folder to save a screen image when you save it on the key emulation screen. Click “Change” button and the folder selecting window appears. Select the folder and click “OK”.



■ "Miscellaneous"



Settings synchronization

*On-Line:

Transmits and receives the setting automatically at the time of the opening and closing the analyzer setting window. If you mark on "Disable automatic settings receive", you only transmit and do not receive.

*Off-Line or While measuring:

Does not transmit the setting automatically.

You need to save the setting as a file, because when you open the analyzer setting window, it automatically receives the setting and overwrite it.


Simulation programs transmission

The setting data transmitted and received will include simulation programs.

Chapter 6 Remote Monitor


This function allows to start measurement of your analyzer and to record measurement data in the HDD of the PC, displaying the data in real time.

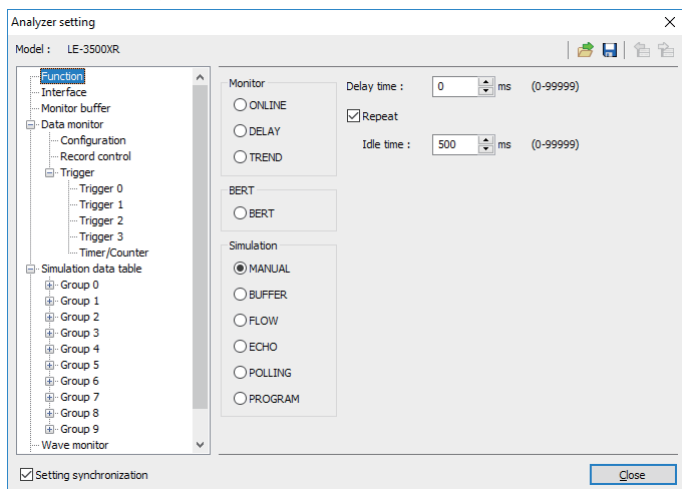
Connection



After finishing the remote setting, click  on the tool bar of the window (or click "Connect" of the remote menu) to connect with you analyzer.

At the time of completing the connection with your analyzer, the connection state display part of the data window displays "Stopping", and the model display part displays the model name of the analyzer connected.

Analyzer Setting


Click  on the tool bar of the data window to set you analyzer (or click "Analyzer setting" of the measurement menu.)

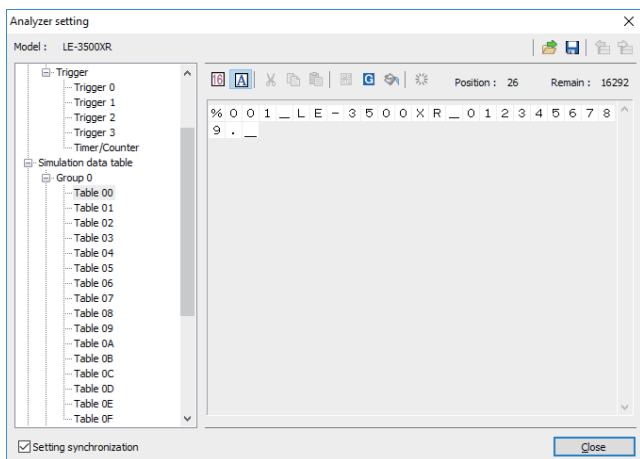


On the analyzer setting window, every time you change the setting on a tree (on the left side of the window), the contents of the setting (on the right) are changed. Set the necessary settings. Click  to send the setting contents to your analyzer. On the other hand, click  to receive the setting contents of you analyzer.

*When you continuously measure for long hours using remote monitoring, do not set "Record control" to "Full stop: On", or "Trigger" to "Action: Stop".

Simulation Data Setting

Click  on the toolbar of the data window to select the simulation data table you would like to set (or click “Analyzer setting” of the measurement menu.)



:Change the data to hexadecimal or character code.



:Change the input method to hexadecimal or character code.



:The character which is focused is set to the parity error (or the multi processor bit)



:Input BCC (or FCS)



:Input the data from “Begin data” to “End data” for the number of times set in “Data size”.

“Begin data”< “End data” : Inputs the number of times set in “Data size” while performing “+1” from “Begin data”

“Begin data”> “End data” : Inputs the number of times set in “Data size” while performing “-1” from “Begin

data”



:Delete all data in the table.



:Cut selected data.



:Copy selected data into clipboard.





:Paste data from clipboard.

Max speed when remote monitoring





Max speed which analyzer can measure is depending on the connection to the PC. Refere to the following standard speed.

	No frame interval	Frame interval of 1m sec
USB	670kbps	1.9Mbps
Wi-Fi	200kbps	460.8kbps
Serial	20kbps	20kbps



*1 This result is when you monitor the full-duplex line in which 1KB frames is transmitted. For Wi-Fi connection, depending on the radio condition the speed may be lower than above value.

- It will cause the data loss if the actual communication speed is more than the max. speed.
And PC will stop the action until the analyzer process all measured data to the PC.
- When the measured data is lacked,   will displayed on the window.
- Key emulation mode will decrease the max. speed.

Start Measurement

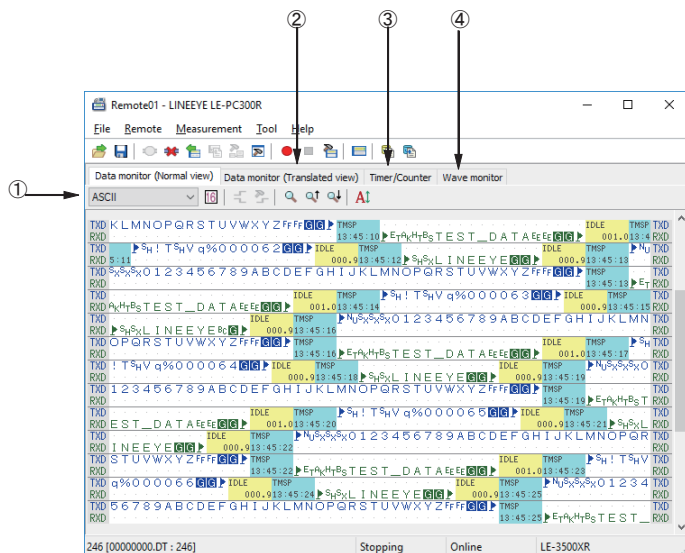
Click  on the toolbar of the data window (or click “Run measurement” of the measurement menu) to measure. After measurement starts, “Measuring” is displayed on the state display part, and data received from your analyzer is displayed. You can change the character size (click ), the character code, the display in hexadecimal (click ), and the pause while measuring (click .

Stop Measurement





To stop measurement, click  on the toolbar of the data window (or click “Stop measurement” of the measurement menu.) After stopping measurement, you can scroll data. Data is automatically saved in the folder you specified on the remote setting. To save with another name, click  (or click “Save data file” of the file menu.).

At the time of stopping measurement, the last file is displayed. To display all files, click  (or click “Open data file” of the file menu) and select the file to display.


Remote Monitor Screen



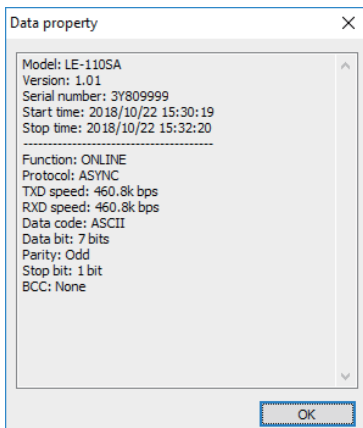
There are following methods to switch the screen display.

- Change display code Select a character code from the drop down list (marked above 1) which displays the character code.
- Hexadecimal display Click  .
(Displays in hexadecimal including the special characters.)
- Control line information display
Click  .
Click  to open the control line information setting window.
- Translated view To switch the screen into the translated view screen, click the data monitor (translated view) tab (marked above 2.). Click  to switch the screen into the packet translated view if the packet translation is possible. Click the data monitor (normal view) tab to switch the screen into the original display screen.
- Timer / Counter To switch the screen into the timer / counter display screen, click the timer / counter display tab (marked above 3).
- Wave monitor display To switch the screen into the wave monitor display screen, click the wave monitor display tab.

Read the Measurement Data

Click  on the toolbar of the data window (or click “File” -> “Open data file”) to select a file of the measurement data. When two or more files are opened, they are displayed as continuous data.

Click “File” -> “Show data property” to check the configuration, date of measurement and so on.



Search Data

Click  to set the search conditions on the data search window.

-Search conditions

- | | |
|----------------------|---|
| “Trigger” | Data which meets the trigger conditions |
| “Error” | Parity error/Framing error/BCC error/FCS error/Break/Abort/Short frame error (Data which meets what was marked). |
| “Character (Hex)” | The data length of a maximum of eight characters. (Can specify don't care and bit mask.) |
| “Character (String)” | The string length of a maximum of sixteen characters. (Can specify the characters in alphabet, number or symbol (in ASCII)) Data search is made according to the display data code. |
| “Idle time” | Idle time more than the appointed time. |
| “Time stamp” | The designated time stamp. (Can specify don't care.) |

-Search operation

- | | |
|---------------|--------------------------------------|
| “Display” | Display the matched data on the top. |
| “Calculation” | Display the number of data matched. |


* To learn more details of the search condition, read the instruction manual of your analyzer.

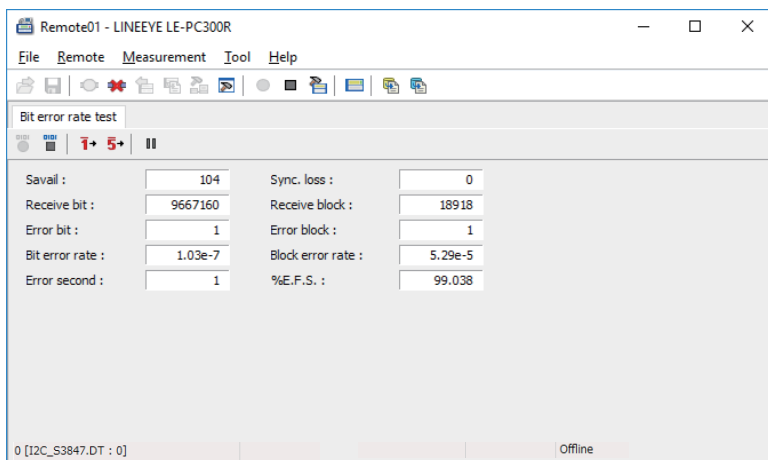
Click  (search the forward data) or  (search the backward data) to search and calculate data.









Chapter 7 Bit Error Rate Test (BERT)

Bit error rate test (BERT) can monitor the quality of communication lines in the long distance.

Start Measurement

Click  on the toolbar of the data window (or click “Run measurement” of the measurement menu). After measurement starts, the following screen appears.




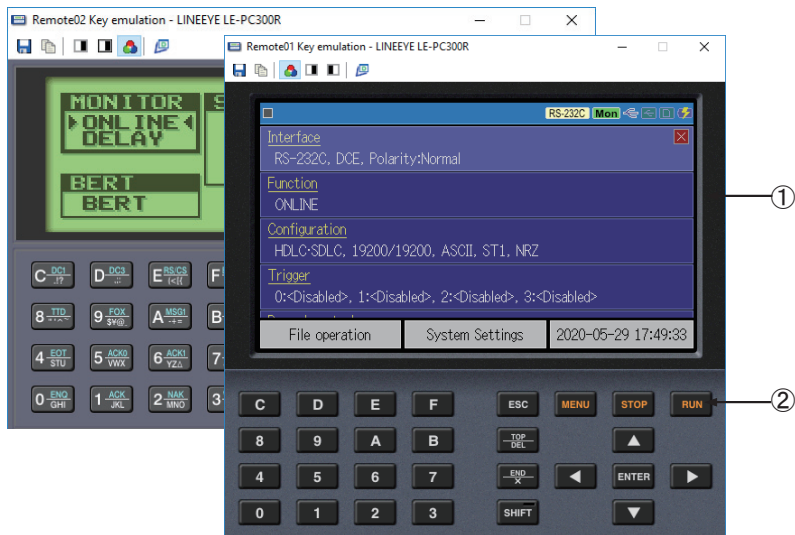
-  : Start BERT.
-  : Stop BERT. (The test pattern is still output.)
-  : Output error of 1 bit.
-  : Output continuous error of 5 bits.
-  : Pause on updating display.
-  : In the case of the repeat mode BERT, multiple results can be received and converted into CSV when measurement stops.
Converted results are saved as BERTDATA.csv.
-  : Convert the BERT results of the repeat mode saved on the analyzer (saved on the CF card.) into CSV.
-  : Save BERT results. In the repeat mode, press “Text conversion”
to save the history as the CSV file, because only the latest result is saved.

Chapter 8 Key Emulation

This function allows to control the analyzer from a far place. (remote control)

Run Key Emulation








Click  on the toolbar of the data window (or click “Key emulation” of the tool menu.).



1. Displays the screen of your analyzer being connected.
2. Emulate the key of your analyzer.

Capture the Screen Image


The display screen image of the connected analyzer can be saved in the bitmap (BMP) file format in the folder specified at “Remote setting” or “Key emulation”.

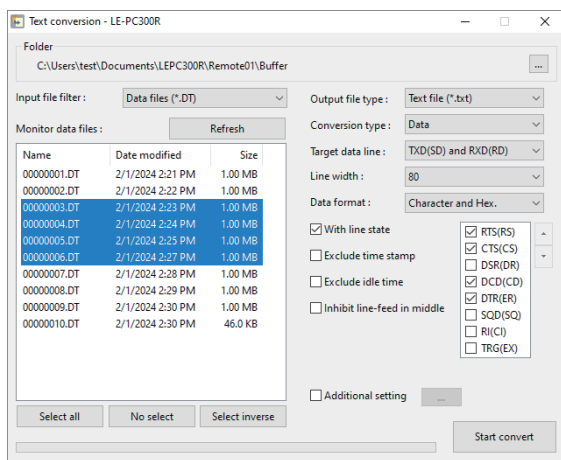
-  : Saves the current screen display as a bitmap file.
-  : Copy the present screen to the clipboard.
-  : Sets the bitmap file to be saved to monochrome/grayscale mode.
-  : Sets the bitmap file to be saved to grayscale inversion mode.
-  : Sets the bitmap file to be saved to monochrome mode (with outer frame).
-  : Create a bitmap file in a color mode.
-  : Go back to the previous data window.

Chapter 9 Text Conversion

This function allows to convert the data which is measured on the remote monitor, and which is saved on such as a SD card and USB flash drive into a text file.

Text Conversion Function Setting

Click [] on the toolbar of the data window (or click “Text conversion” in the “Tool” of the menu.). The following text conversion window opens.



-Folder

Specify a folder which has the data you wish to convert into text.

-Input file filter

Selects from “Data files” or “Auto save files”.

-Monitor data file

Select a file you want to convert from the list.

Click to select a file. Multiple files can also be selected by using Shift key / Ctrl key.

You can select or cancel all by clicking the button under the list.

When the present state is not reflected in the list, it can update by “Refresh” button.

-Output file type

Selects a file type of a file that you want to output the conversion result.

You can select “Text file” or “CSV file”.

-Conversion type

You can select from the followings.

When “Data” is selected, it converts by each data.

When “Frame” is selected, it converts collectively for each frame.

-Target data line

Select the data line to convert from “TXD(SD) and RXD(RD)”, “TXD(SD) only” and “RXD(RD) only”.

-Additional setting

If this is checked, the additional setting becomes effective.

Following settings are available when “Text file” is selected for Output file type and “Data” is selected for Conversion type.-Exclude time stamp

-Line width

Select the number of characters to be converted per line from “40”, “72”, “80”, or “136”.

-Data format

Selects the data format to convert from “Character and Hex.”, “Character only” and “Hexadecimal only”.

-With line state

If this is checked, converts data with control line state.

Select a control line to be converted from the list of right side. The order can also be changed.

-Exclude time stamp

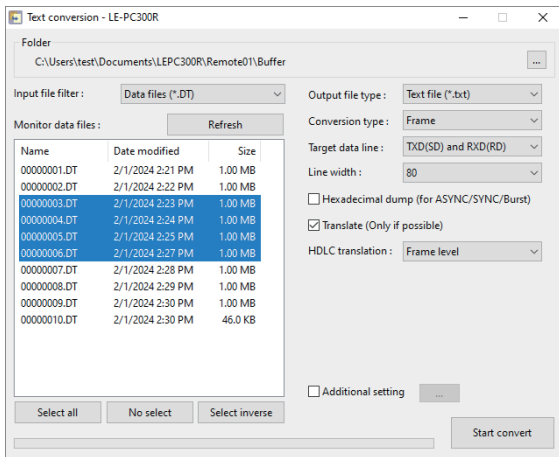
If this is checked, the time stamp data is excluded from the target to convert.

-Exclude idle time

If this is checked, the idle time data is excluded from the target to convert.

-Inhibit line-feed in middle

If this is checked, the line-feed is not inserted in the middle of a time stamp and an idle time.



Following settings are available when “Text file” is selected for Output file type and “Frame” is selected for Conversion type.

-Line width

Select the number of characters to be converted per line from “40”, “72”, “80”, “136” and “Maximum”.

-Hexadecimal dump (for ASYNC/SYNC/Burst)

If this is checked, the data measured by ASYNC, SYNC, and Burst protocol is converted into hexadecimal values instead of characters.

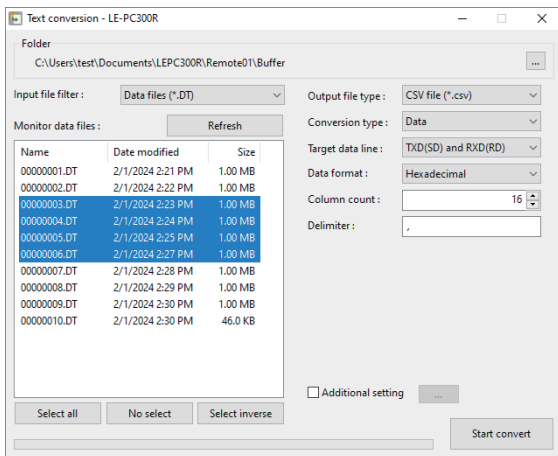
-Translate (Only when possible)

If this is checked, the frame will be translated when the protocol is supported for translation.

-HDLC translation

Select the layer for translating and converting HDLC data from “Frame level” and “Packet level”.

The setting items other than the above are the same as when “Data” is selected as Conversion type.



Following settings are available when “CSV file” is selected for Output file type.

-Data format

Select the data format to convert from “Hexadecimal”, “Decimal” and “Character”.

-Column count

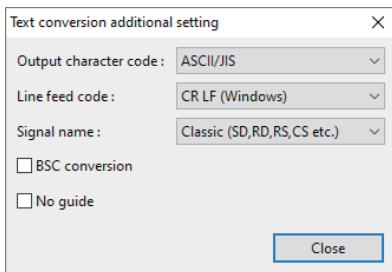
Set the number of columns per row in the range of 1 to 65535.

-Delimiter

Sets the delimit character such as “,”

The setting items other than the above are the same as when “Text file” is selected as the Output file type.

When the Additional setting is being checked, if the “...” button of right side is clicked, the following window will open.



-Output character code

The character code of an output file can be changed.

Selects from “ASCII/JIS”, “UTF-8(without BOM)” and “UTF-8(with BOM)”.

-Line feed code

The line feed code of an output file can be changed.

Selects from “CR LF (Windows)”, “LF (Linux/Unix)” and “CR (Classic MAC)”.

-Signal name

Signal names can be selected from the following presets.

“Classic” (SD, RD, RS, CS, etc.) is the same notation as LE-3500R, etc.

“New” (TXD, RXD, RTS, CTS, etc.) is the same as the notation of LE-3500XR, etc.

“Mixed” (SD, RD, RTS, CTS, etc.) is the same notation as LE-8200, etc.

-BSC conversion (Only when Output file type is Text file)

If this is checked, BSC conversion is executed when the text conversion per data is done.

BSC conversion is the translation conversion which extracts the control code of BSC and BCC.

It is effective when “Data” is selected for Conversion type.

-No guide (Only when Output file type is Text file)

If this is checked, it does not output the guide text such as the header of when text conversion is done.

These settings become effective only when the Additional setting is being checked.

When the Additional setting is not checked, the following default settings are applied.

Output character code: ASCII/JIS

Line feed code: CR LF (Windows)

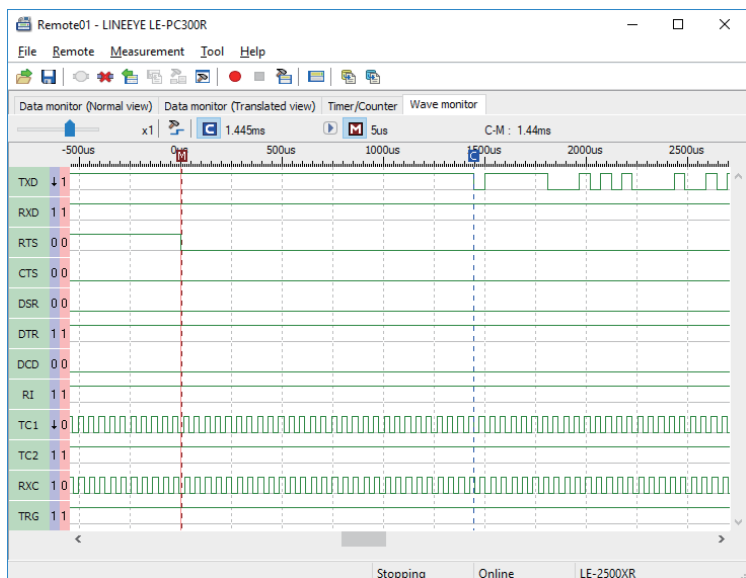
Signal name: Classic (SD, RD, RS, CS etc.)




BSC conversion: Not checked

No guide: Not checked

Start Text Conversion

Click “Convert.” A converted file is saved in the folder which contains its source file.



- Scaling factor Move the slider  x1/2 and select the scaling factor.
- Cursor display Press “**C**” and double-click the waveform display to display the cursor at that position. When you press “**C**” again, the cursor display disappears.
- Marker display Click **M** or  to display the marker at the cursor position. When you press “**M**” again, the marker display disappears.
- Time measurement Drag **C** and **M** on the screen of the wave monitor to the position you wish to measure. “C-M:**ms” shows the time between the cursor and the marker (eg.The image above indicates C-M: 74ms.).
- Signal display order setting Click  to set the order to display on the signal standard setting.

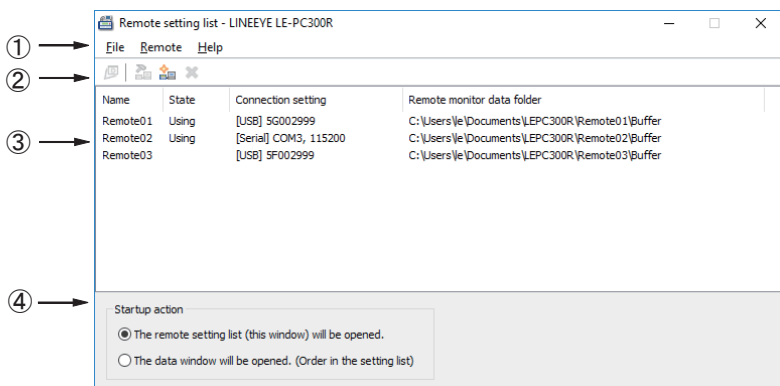
Chapter 11 Connecting Multiple Analyzers

To connect multiple analyzers at the same time, add the necessary setting for the number of analyzers to connect.

Adds the remote setting on the remote setting list window.


To open the remote setting list window, click  from the toolbar of the window (or click “remote setting list” of the tool menu).

Remote Setting List Window



1. Menu
Performs each operation.
2. Toolbar
Performs each operation.
3. Remote Setting List
Displays the remote setting.
4. Option Setting
You can select the language (valid after reboot).

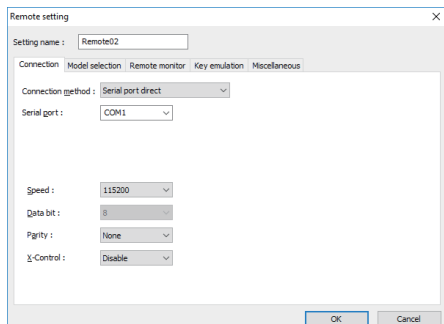
Add the Remote Setting

To add a new remote setting to the list, click  on the toolbar of the remote setting window (or, click “new setting” of the remote menu.). Sets the necessary items.


* For more information about each item of the remote setting, read “Chapter 5 Environment setting.”

* For multiple analyzers, make sure not to specify the same folder as location of saving the remote monitor data.

When opening this setting window from the remote setting list window, you can rename the setting name. Adds the remote setting for the number of analyzers you wish to connect. (It does not allow you to rename the setting name when the window opened from the data window.)




Open the Data Window

To open the selected data window for remote setting, select the specific remote setting from the list of the remote setting list window (multiple selections possible), and click  on the toolbar (or, click the “open data window” of the file menu.).

Delete the Remote Setting

You can delete unnecessary remote setting.

At first, select the remote setting you wish to delete from the list of the remote setting list window (multiple selections possible) and click  on the toolbar (or, click “delete setting” of the remote menu). Then, the deletion confirmation appears and the selected setting will be deleted by clicking the “OK” button.

However, if the remote setting which is using in the data window, you cannot delete it. If you end the application with all the remote settings deleted, a new setting (default setting) will be automatically added when you start the application next.

Operate Setting When Starting

You can select operation when LE-PC300R starts from the following:

“The remote setting list (this window) will be opened”

The remote setting list window will be opened. If the window has already opened, it will be displayed in front.

“The data window will be opened. (Order in the setting list)”

The data window will be opened in the order according to the remote setting list. If all data windows for the remote setting have already opened, the operation is the same with “The remote setting list (this window) will be opened.”

Startup Options

When starting the LE-PC300R, following options can be used.

-r "<Setting name>"

Start measuring automatically by the specified Connection setting after starting LE-PC300R.

To start measuring by the multiple settings, ex. specify as follows.

-r "Remote01" -r "Remote02"

When starting the measurement by using AUTO measurement function, the warning message of losing the existing data file will not be displayed. Also, when starting the measurement by using APPEND mode and the selected configuration file automatically, the existing data file will be erased without the warning message when starting LE-PC300R.

-q

It saves measured data to the data file immediately, and try to keep the format of data file as normal. (LINE-EYE does not warrant the condition is normal.)

Also, it will allow to read the measured file which is in the process of saving data, and able to copy the data file. However, the data file which is in the process of saving data can not be opened by the other window of LE-PC300R.

It is possible that this function will deteriorate the ability of PC or storage of saving data file. Therefore, LINEEYE does not recommend using this function.

Chapter 12 Specification

Applicable analyzer	LE-3500XR(V2)/LE-2500XR(V2)/LE-3500XR/LE-2500XR/LE-3500R/LE-2500R/LE-1500R/LE-110SA/LE-120SA/ LE-3500/LE-2500/LE-1500 *1	
Connection	USB, Wi-Fi, LAN (the LAN-serial converter SI-60, SI-60F), Serial	
No. of analyzers to be connected	Multiple analyzers can be connected and controlled simultaneously. (No. of connectable analyzers depends on the performance of the PC.)	
Measurement conditions	Measurement conditions (communication parameters, triggers and simulation data) can be set.	
Key emulation	Displays the analyzer's display and keys on the PC screen and can perform the analyzer remote control.	
Remote monitor	Starts/stops the measurement, displays the measurement data on the PC screen, and records the data continuously	
	Recording mode	Fixed buffer mode: Measures data up to the specified size and stop automatically. Ring buffer mode: Records the latest data of the specified size endlessly.
	Recording capacity	Max. 256GB: Can be specified up to 2,048 files in the unit of 1/2/4/8/16/32/64/128 MB.
Text-CSV conversion	Specified number of the recorded files can be converted to text or CSV format at once.	
Screen image capture	Analyzer's display shown by the key emulation can be saved as the bitmap files.	
Display modes	Standard display	Displays the communication data, idle time, time stamp and data line status. Displays in ASCII, EBCDIC, JIS7, Baudot, Transcode, IPARS, EBCD, EBCDIK, HEX(includes errors).
	Translation display	Translates and displays protocols such as SDLC, X.25, LAPD, PPP and IrLAP. Displays frames of I ² C and SPI.
	Waveform monitor display	Enlarges and reduces the waveform (Can measure time, and rearrange signals.)
Search	Finds and displays the data that matches the search conditions.	
	Search conditions	Specified character (Hex: max.8 characters / String: max.16 characters) (don't care and bit mask can be specified) Error (parity, framing, BCC, break/abort, short frame: individual error type can be specified.) Idle time beyond a specified duration. Specific time stamp (don't care can be specified.)
System requirements	PC	RAM: 1GB or more SSD/HDD: 10MB + free space for saving the measurement data.
	OS	Windows 11/10

*1 Cannot be used with the analyzer extension options OP-SB7XC, OP-SB7XL, and OP-SB7GX.

*2 Available only by the analyzers that support Wi-Fi connection.

*3 LE-3500XR(V2), LE-2500XR(V2), LE-3500XR and LE-2500XR cannot be connected by serial connection.

There is a registration page on our web site.

(<https://www.lineeye.com>)

Please register your product for further support.

We will provide you the firmware update
information and sales information etc.

LINE EYE CO., LTD.

4F., Marufuku Bldg., 39-1 Karahashi Nishihiragaki-cho, Minami-ku,
Kyoto, 601-8468 Japan

Phone: 81-75-693-0161 Fax: 81-75-693-0163

URL: <https://www.lineeye.com>

Printed in Japan

M-853KRE/PC