

PC Linke software *LE-PC87*

Instruction Manual

The CD-ROM attached to the product contains the latest instruction manuals in PDF format. Please also refer to them.

You need the serial number when installing. You will find the serial number on the side of the box that contains LE-PC87 (or on the card packed with LE-PC87).

Contents

Chapter 1 Before Using the Product	1
Chapter 2 Introduction	2
Outline	2
Unpacking and Accessories	2
Chapter 3 Before Start-Up	3
Installation Guide	3
Uninstallation Guide	3
USB Driver Installation	3
Analyzer Setting	4
Chapter 4 Data Window	5
Explanation of the Data Window	5
Functions of Data Window	6
Steps	7
Chapter 5 Environment Setting	9
Remote Setting	9
“Connection” Page	9
“Model selection” Page	11
“Remote monitor” Page	12
“Key emulation” Page	13
“Miscellaneous” Page	14
Chapter 6 Remote Monitor	15
Connection	15
Analyzer Setting	15
Start Measurement	16
Stop Measurement	16
Max Frames of Remote Monitoring	17
Chapter 7 Data Display on the Data Window	18
Data Monitor Display	18
Meaning of the Displays on the Data Window	19
Watch Data Display	20
Watch Data Settings	20
Display the Difference of Time Stamp	22
Chapter 8 Data Search	23
FACTOR	23
ACTION	27
Start Data Search	27
Chapter 9 Key Emulation	28
Explanation of Key Emulation	28
Save the Screen Image	28
Chapter 10 Text Conversion	29
Explanation of Text Conversion	29
Stat Text Conversion	30
Chapter 11 Specifications	31

Chapter 1 Before Using the Product

Software License Agreement

This is a legal agreement between you, the end user, and LINEEYE CO., LTD. (LINEEYE). Carefully read all the terms and conditions of this agreement prior to use the software program or attached document. You are consenting to be bound by and are becoming a party to this agreement.

1 Copyright

The rights and copyrights of the SOFTWARE are owned by LINEEYE.

2 Grant of License

LINEEYE grants to you this software can be used on only one computer when you get this software and agree to our License agreement. Therefore, you may not transfer, rent lease and loan to third parties.

3 Copy / Analysis / Modification

This license does not allow you to copy, analyze or modify the whole or any part of the material except for the case that it is prescribed in the instruction manual.

4 Upgrade

This software may be upgraded without a advance notice because of technical progress of hardware or software. LINEEYE provides software upgrades by payment for upgrade. For upgrade, it is granted only to the agreed License Agreement owner of this software.

5 Limitation of Liability

In no event shall LINEEYE be liable for any direct or indirect damages, special or consequential damages resulting from the use or in way related to the use of the software. Besides in no event shall LINEEYE be liable for damages resulting from equipments or mediums.

6 General

If any provision of this agreement is invalid, such provision shall be removed from this License Agreement.

7 Support

LINEEYE will support only to the problems are caused by this software or functions and operation of this software.

8 Others

The articles are not mentioned in this agreement, conform to the copyright laws and the other related laws.

LINEEYE CO., LTD.

Chapter 2 Introduction

Thank you for your purchase of LINEEYE's PC Link Software, LE-PC87.

- To use it correctly, it is advised to read and understand this instruction manual thoroughly, together with the instruction manual for the analyzer.
- Keep this instruction manual.

Outline

This software allows LE-8200 to capture the monitored data measured by OP-SB87 (optional expansion kit) into a PC through a USB port, an AUX port (serial), or a memory card.

Unpacking and Accessories

When you unpack the product, make sure of the following:

CD-ROM (Software)	:1
Instruction Manual	:1
Warranty	:1

Please let us know if you find any damage to the product caused by transportation, or if there are accessories lacking.

Installation Guide

1. Insert the CD-ROM into the CD-ROM drive.
2. From "Start" menu, select "Run".
3. Input "D(specify the CD-ROM drive) : \setup" in the command line and click "OK".
4. The installer program will start. To install, follow the set-up instruction.
5. Click "Finish" after "Finish the installation" is indicated.

Uninstallation Guide

1. From control panel, click "Add/Remove Programs".
2. Select "LE-PC87" from the list, then click "Remove" button.

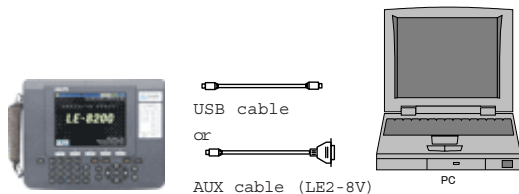
USB Driver Installation

This PC link software can controll the analyzer via USB. You need to install the USB driver to controll the analyzer via PC. USB driver is stored in the CD-ROM.

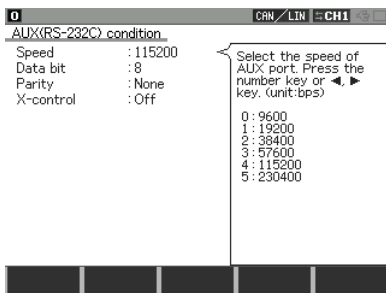
- 1) Connect the USB port of analyzer and the PC.
- 2) Turn on the power of the analyzer.
- 3) "New Hardware Wizard" will start to install the USB driver .
Select "No, not this time" for the question of "Can Windows connect to Windows Update to search for software?".
- 4) Select "Install from a list or specific location" for the question of "What do you want the wizard to do?".
- 5) Select "Search for the best driver in these locations" and mark on "include this location in the search". Select the folder that contains the USB driver file.
- 6) Click "Continue Anyway" for the question of "has not passed Windows Logo testing to verify its compatibility with Windows XP".
- 7) Click "Finish" when you find the message, "Completing the Found New Hardware".

Analyzer Setting

- 1) Serial connection: Connect the analyzer and a PC by the AUX cable (LE2-8V).USB connection: Use the USB cable.



- 2) Set the AUX port of the analyzer as follows if using the serial connection.
(Not necessary to set the AUX port if using the USB connection.)



<Example of setting>

Speed: 115200bps
Data length: 8-bit
Parity: NONE (recommend)
X-CONT (flow control): OFF

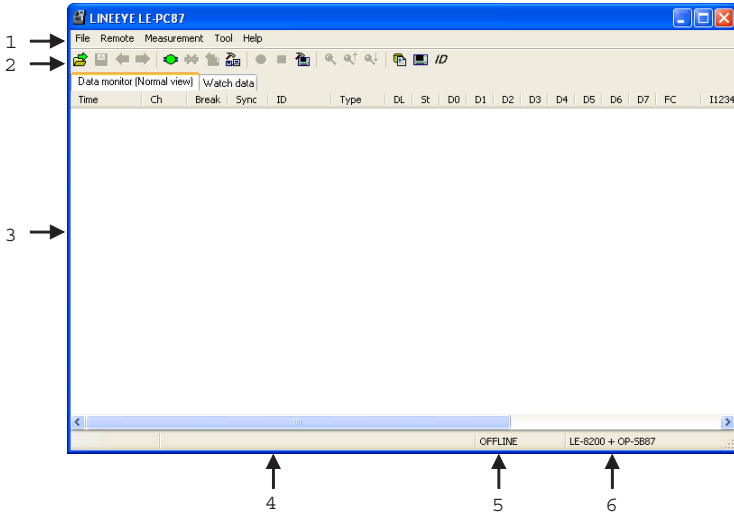
<Notice>

- * Firmware of OP-SB87 should be Ver1.02 or above. If using the firmware below that, please update it.
- * Do not turn off the analyzer when connecting to a PC.
- * If using the AUX port for connection, do not put anything in the USB port.
- * It may cause some data loss if using the AUX port for remote control compared to the USB port.
- * When the PC goes into a power saving mode, LE-PC87 will be disconnected. Set off the power saving mode.

Chapter 4 Data Window

Explanation of the Data Window

From "Start" menu, click "Programs" or "All Programs" -> "LINEEYE" -> "LE-PC87" -> "LE-PC87". The following display will be appeared.



1. Menu

Performs various operations.

2. Tool Bar

Performs various operations.

3. Data Display

Displays measured data.

4. Data Position Display

Tells you where you are pointing, out of whole data in the Data Display.

















2 / 7

5. ON-LINE/OFF-LINE Display

Tells you whether or not the analyzer is connected.

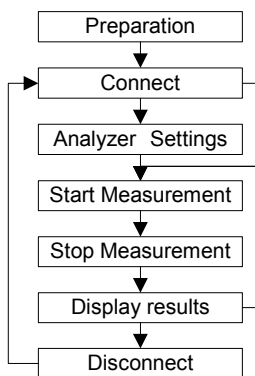
6. Model Name of Analyzer

Shows the model name of analyzer and expansion kit when ON-Line. Shows the model name of analyzer which is set by the software when OFF-Line.


Menu	Tool Bar	Meaning
File		
Open data file...		Opens data files (extension .DT) *1
Save data file...		Names and saves the data displayed on the Data Window.
		Opens the previous file. *2
		Opens the next file. *2
Exit application		Closes LE-PC87.
Remote		
Connect		Connects to the analyzer.
Disconnect		Disconnect to the analyzer.
Receive data		Receives the measured data from the connected analyzer.
Remote setting...		Sets remote settings.
Measurement		
Start		Starts measuring by the remote control.
Stop		Stops measuring by the remote control.
Analyzer setting		Set the analyzer.
		Sets the data conditions and finds it.
		Finds the previous data.
		Finds the next data.
Tool		
Key emulation		Performs key emulation.
Text conversion		Performs text conversion.
Display the difference of time stamp		Displays the difference of time stamp (compares to the last timestamp)
Watch data	<i>ID</i>	Sets the "ID" to watch data.
Help		
About...		Displays the version of the software.

*1: The file except CAN/LIN data cannot opened.

*2: Cannot open the data which is named, or the name is not in succession.



Step 1. Preparation

When using LE-PC87 at the first time, press "  " (or press [Remote] in the menu bar.) Set the place for saving data and so on.

* "Remote" setting is described at Chapter5.

Step 2. Connect

After setting "Remote", check the connection with the analyzer. Press "  " (or [Remote] -> [connect])


It will ask to make a saving folder if it cannot find the place for saving data. Press "OK". (If "Cancel", it cannot connect with the analyzer.)

*If it cannot find the place for saving data, it will make a saving folder such as below.

...\My Documents\LEPC87\Remote\Buffer

...\My Documents\LEPC87\Remote\Screen


Step 3. Analyzer Settings

Before starting measurement, it is necessary to set the communication conditions. Press " " to set by the remote control. (or [measure] -> [analyzer settings])


- * It is not necessary if settings are set by the analyzer.
- * Analyzer settings are automatically reflected in the software. ("Setting synchronization" is set as the default.)

Step 4. Start Measurement

Start measurements if analyzer settings are all done.



Press " " to start measurement. (or [measurement] -> [start measurement])

Step 5. Stop Measurement

Click " " to stop measurement. (or [measurement] -> [stop measurement])

- *it will stop measurement when block size set in the "remote monitor" of "remote settings" becomes the maximum size.

Step 6. Display Results


After the measurement, the last data file will be loaded in the screen. To display the previous file, press "". To display the next data, press "". Name the data file if necessary.

- *Details of the data display is described at Chapter7.

Step 7. Disconnection

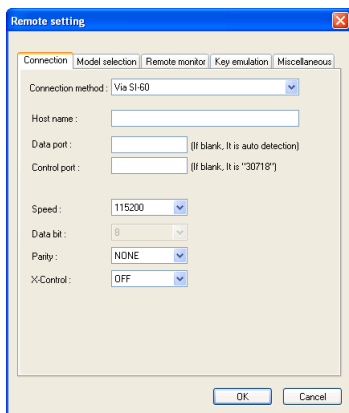
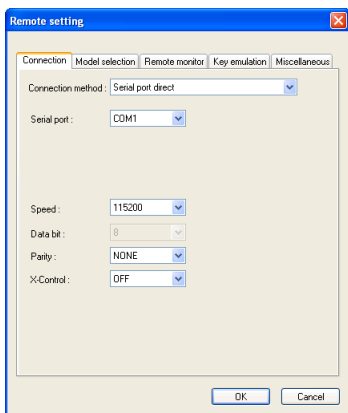
When finishing the application, press "". (or [remote] -> [disconnection] in the menu bar)

Remote Setting

Click "  " on the Tool Bar (or [Remoto] -> [Remote Setting] in the menu bar) to set remote settings. In the "Remote Setting", there are "Connection", "Model selection", "Remote monitor", "Key emulation" and "Miscellaneous" page. Press "OK" when finishing the settings.

■ "Connection" Page

Set conditions for remote connection.



● [Connection method]

Select a connection method to connect with the analyzer.

"Serial port direct"

Select when connecting by the serial port on the PC or using the Serial-USB converter (LE-US232B etc.)

"USB"

Select when connecting by the USB port.

"Via SI-60"

Select when connecting via LAN-Serial converter (SI-60/60F).

(To learn more about settings of the converter, read the instruction manual of converter. To control via SI-60, you need to have LE2-8C, or LE2-8V and a Dsub25 (male) -9 (female) converter)

<Serial port direct>

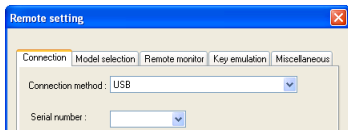
- [Serial port]

Select the Serial port of PC from COM1 - COM9. Or, input the COM port number if the COM port is above COM10.

<USB>

- [Serial number]

Sets the serial number of the analyzer. If the analyzer is connected, select from the drop down list.



<Via SI-60>

- [Data port]

Set the port number for transmitting and receiving serial data. Normally, do not put any number. If blank, it is auto detection. If the port number is changed by router or firewall etc., it needs to be set.

- [Control port]

Set the control port number of SI-60. Normally, do not put any number. If blank, it is auto detection. If the port number is changed by router or firewall etc., it needs to be set.

<Serial port direct / Via SI-60>

- [Speed]

Set the same speed as the AUX port setting on the analyzer.

- [Data bit]

Data bit is fixed to be 8 bit. Also the AUX port setting on the analyzer must be 8 bit.

- [Parity]

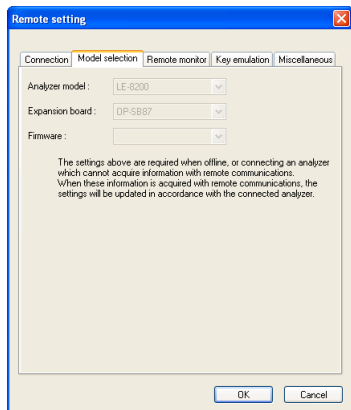
Set the same data parity as the AUX port setting on the analyzer. Normally, put "None".

- [X-Contro]

Set whether or not to use the flow control of X-Control for the communications between software and analyzer. Normally put "None".

■ "Model selection" Page

Sets the analyzer settings. Mainly, it is used at the time of Off-line. However, it is used at the time of On-line, in the case of that some information cannot be received by the remote communication. If the information is received by the remote communication, these settings are automatically changed.



● [Analyzer model]

Selects the model name of the analyzer.

This is the expansion for future use. Not available now.

● [Expansion board]

Selects the expansion board which is equipped with the analyzer.

This is the expansion for future use. Not available now.

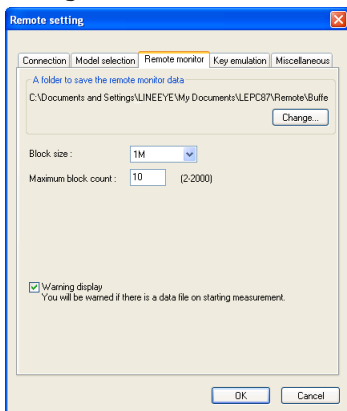
● [Firmware]

Sets if using the optional firmware on the analyzer.

This is the expansion for future use. Not available now.

■ "Remote monitor" Page

Sets the remote monitoring function.



● [A folder to save the remote monitor data]

This folder saves data received by the analyzer using the remote monitor function. To change the settings, click [Change] button. Then the window to select a folder appears. Select the proper folder and click [OK] button. The file name of saving data is started from [00000000.DT] in numerical order.

Recommends to specify an original folder.

Specify a drive which has enough capacity.

(If it does not have enough capacity, the PC may not operate correctly)

● [Block size]

Set the data capacity per a file. Select from "1MB", "2MB", "4M", or "8MB".

● [Maximum block count]

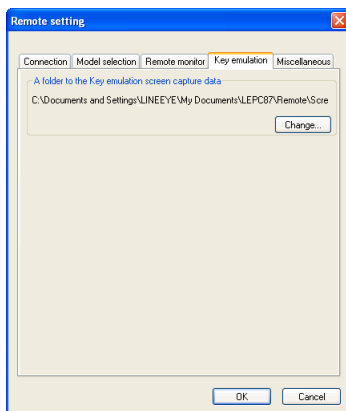
Set the number of maximum saving file. Set from 2 to 20000. When the number of the data file exceeds this setting, the measurement stops automatically.

● [Warming display]

If there is an existing data file where data is going to be saved, warming message will appear when starting the measurement.

■ "Key emulation" Page

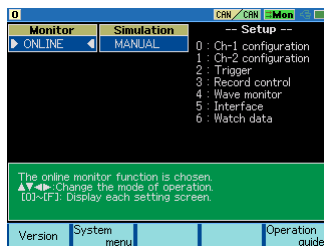
Set conditions for Key emulation.



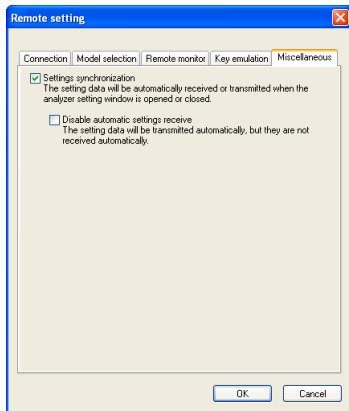
● [A folder to the Key emulation screen capture data]

This is the folder to save a screen image on the key emulation screen.

Click [Change] and the folder selecting window appears. Select the folder and click [OK].



■ “Miscellaneous” Page



● [Settings synchronization]

At the time of ON-Line, when opening the analyzer setting window, it automatically reflects the settings of analyzer. When closing the window, it automatically sends the settings to the analyzer.

However, at the time of OFF-Line, and settings changed while measuring, settings are not sent to the analyzer automatically.


● [Disable automatic settings receive]

It automatically sends the settings to the analyzer. But it will not receive the settings from the analyzer automatically.


Chapter 6 Remote Monitor

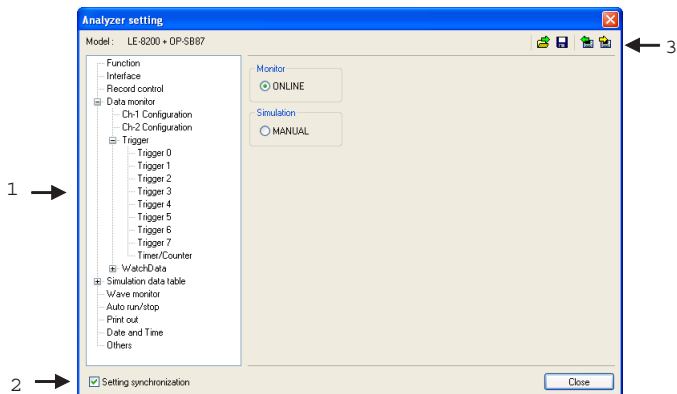
Measures by the analyzer and records data in the HDD of a PC.

Connection

After setting the "remote setting", click " " to connect with the analyzer. (or [remote] -> [connection] in the menu bar.) When it completes the connection, it displays "On-Line" and "analyzer model" in the data window. While using the remote monitor, you cannot operate by the analyzer.

Analyzer Setting

Clicks " " in the data window and sets the analyzer settings. (or [measurement] -> [analyzer setting] in the menu bar)



1. Analyzer setting window





When clicking a different setting in the bar, the settings in the right gray zone become different.

*To monitor long hours by the remote monitor, do not set the analyzer settings such as "recording: full stop on" and "trigger action: stop". It automatically stops the measurement.


2. Setting Synchronization

Setting information in the analyzer can be synchronized with the settings in the software. If changing this setting, it reflects the setting in the [remote setting] -> [miscellaneous].


3. Tool Bar

Tool Bar	Meaning
	Capture settings from a file (.SU format)
	Name and save the setting (.SU format)
	Transmit settings to the analyzer.
	Receive setting from the analyzer.

Start Measurement

Click "  " in the data window and starts measurement. (or [measurement] -> [start measurement].) When starting the measurement, "watch data" window will appear and "data monitor" window will be cleared. "watch data" window displays the received frames, numbers of data loss, and number of files in the data position display (bottom).

Stop Measurement

Click "  " in the data window and stops measurement. (or [measurement] -> [stop measurement].) When the block size set in the [remote setting] -> [remote monitor] reaches the maximum block number, it stops the measurement.

Data will be saved in the specified folder automatically. After stopping the measurement, the last data file will be loaded in the data monitor screen automatically.

Max frames of recording without any data loss is different by the connection method to the PC. Refere to the followings.

USB connection	:Approx.15000 frames/sec
Serial port direct (115.2Kbps connection)	:Approx. 140 frames/sec
Via SI-60 (230.4Kbps connection)	:Approx. 280 frames/sec




*1: This is the max frames per second without any data loss. Even the speed of the target device is 1Mbps, it can measure data without any loss, if it does not exceed the above max frames.



- It will cause the data loss if the actual communication speed exceeds the above speed. And PC will stop the action until the analyzer process all measured data to the PC.
- Key emulation mode will decrease the maximum speed.

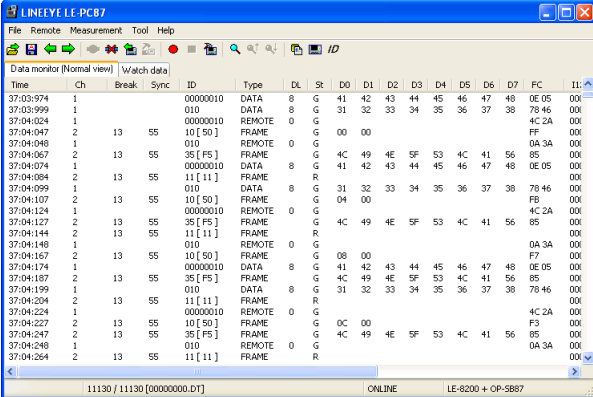
Chapter 7 Data Display on the Data Window

Data Monitor Display

After measuring, it displays CAN/LIN frame data monitored by the analyzer. (cannot display data at real time.)

To display data from a memory card or a PC, click " " (or [File] -> [Open data file] from menu bar) and then select the data file (extension .DT) and click "OK". To display sequential named data file, press " "(previous) or " "(next).

If controlling via USB or AUX port, click " " on the Tool Bar (or [Remote] -> [Connect] from menu bar) to make it ON-Line and then click " " (or [Remote] -> [Receive Data] from menu bar).



Time	Ch	Break	Sync	ID	Type	DL	SR	D0	D1	D2	D3	D4	D5	D6	D7	FC	11
37:03:974	1			00000010	DATA	8	G	41	42	43	44	45	46	47	48	0E 05	00
37:03:999	1			010	DATA	8	G	31	32	33	34	35	36	37	38	78 46	00
37:04:024	1			00000010	REMOTE	0	G									4C 2A	00
37:04:047	2	13	55	10 [50]	FRAME	0	G	00	00							FF	00
37:04:048	1			010	REMOTE	0	G									0A 3A	00
37:04:067	2	13	55	35 [F5]	FRAME	0	G	4C	49	4E	5F	53	4C	41	56	85	00
37:04:074	1			00000010	DATA	8	G	41	42	43	44	45	46	47	48	0E 05	00
37:04:084	2	13	55	11 [11]	FRAME	0	R										00
37:04:099	1			010	DATA	8	G	31	32	33	34	35	36	37	38	78 46	00
37:04:107	2	13	55	10 [50]	FRAME	0	G	04	00							FB	00
37:04:124	1			00000010	REMOTE	0	G									4C 2A	00
37:04:127	2	13	55	35 [F5]	FRAME	0	G	4C	49	4E	5F	53	4C	41	56	85	00
37:04:144	2	13	55	11 [11]	FRAME	0	R										00
37:04:148	1			010	REMOTE	0	G									0A 3A	00
37:04:167	2	13	55	10 [50]	FRAME	0	G	08	00							F7	00
37:04:174	1			00000010	DATA	8	G	41	42	43	44	45	46	47	48	0E 05	00
37:04:187	2	13	55	35 [F5]	FRAME	0	G	4C	49	4E	5F	53	4C	41	56	85	00
37:04:199	1			010	DATA	8	G	31	32	33	34	35	36	37	38	78 46	00
37:04:204	2	13	55	11 [11]	FRAME	0	R										00
37:04:224	1			00000010	REMOTE	0	G									4C 2A	00
37:04:227	2	13	55	10 [50]	FRAME	0	G	0C	00							F3	00
37:04:247	2	13	55	35 [F5]	FRAME	0	G	4C	49	4E	5F	53	4C	41	56	85	00
37:04:248	1			010	REMOTE	0	G									0A 3A	00
37:04:264	2	13	55	11 [11]	FRAME	0	R										00

*When controlling via AUX port on the analyzer, it may take some time to receive data from the analyzer if there is a large amount of data. Also, it cannot receive data while the analyzer is measuring.

*If there is a data loss, it displays "LOSIDATA" at "Ch" in the data monitor display.

Meaning of the Displays on the Data Window

	Meaning
Time	Displays the time (time stamp) when the frame is received.
deltaT	Displays the difference of time stamp. (compares to last time stamp)
Ch	Displays the received channel. (1: Ch1, 2: Ch2)
Break	Displays the number of bit of LIN Synch Break width. (In CAN, it is not displayed)
Sync	Displays LIN Synch Field. (In CAN, it is not displayed)
ID	In CAN, displays the ID of received frame in HEX. In LIN, displays an Identifier without parity and an Identifier with parity in HEX in []. Example: 11110101= 35 [F5]
Type	Displays the types of received frame. DATA: Data frame of CAN (Data transmission) REMOTE: Remote frame of CAN (Request for data) ERROR: Error frame of CAN FRAME: Frame of LIN (Standard frame) ILLEGAL: Illegal frame of LIN.
DL	In CAN, displays the contents of data length cord(number of data byte) in decimal. In LIN, displays the data length which is set on the CONFIG screen of the analyzer in decimal. (It can not be displayed when "FRAME END" is "TIME".)
St	Displays whether or not the frame is normal. (Refer to "ST Display")
D0 to D7	Displays the contents of data field in HEX.
FC	Display 2byte of CRC for CAN, and contents of Checksum in HEX for LIN.
IN1234	Displays the digital value in IN1 to IN4. (0=Low, 1=High)
Analog ch 1 to 4	Displays the analog value in IN1 to IN4.
TRG	Displays the frame of which trigger is generated.

◆ St Display

ST	Meaning
G	Normal frame
B	SynchBreak error of LIN. (Dominant is 10 bit)
S	SynchField error of LIN.(other than 55h)
P	Parity error of LIN.
L	Data length error of LIN. (When "FRAME END" setting is "ID")
R	When there is no data in the response field of LIN.
C	Checksum error of LIN or CRC error of CAN.
A	ACK error of CAN.
E	Error frame of CAN.
F	Form error of CAN. (When CRC or ACK delimiter is "0")(*1)

*1:Support if OP-SB87 firmware is Ver1.05 or above.

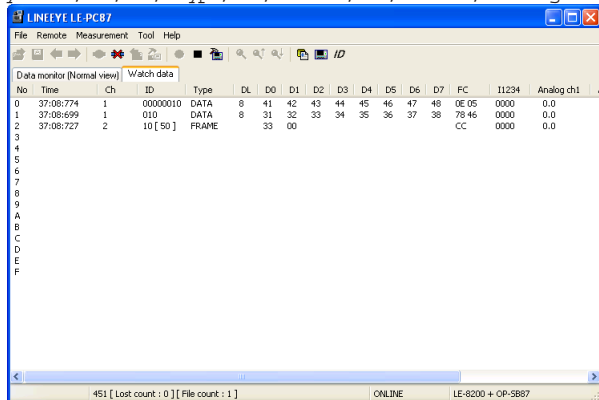
◆ Miscellaneous

Display	Meaning
()	Framing error (when the stop bit is dominant) Example: (01)

Watch Data Display

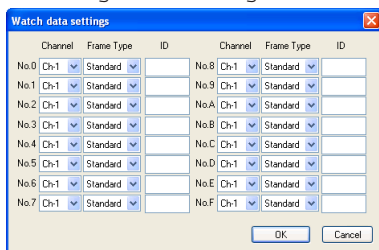
Displays the latest ID frame data by using "watch data setting". It updates the data every second and displays only the latest data (except error frame). When stopping the measurement, it cannot update data.

*Only display Time, Ch, ID, Type, DL, D0 -D7, FC, IN1 -4, Analogch1 -4.



Watch Data Settings

Click "ID" (or [Tool] -> [watch data setting]) and set the frame ID to watch. It is possible to change this setting while measuring.



- Channel

Ch-1 :CAN1/ LIN1 frame Ch-2 : CAN2/ LIN2 frame

- Frame Type

Standard:CAN/LIN standard format

Extended:CAN extension format

- ID

Set the ID to watch in HEX. If nothing is input, it cannot watch data.

CAN standard format :specify in the range of 0-7FFh

LIN standard format :specify in the range of 0-3Fh

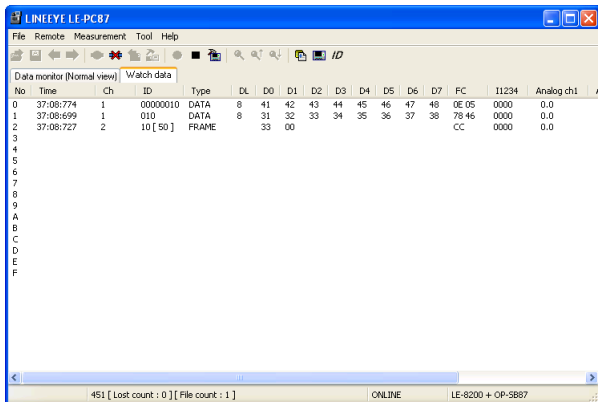
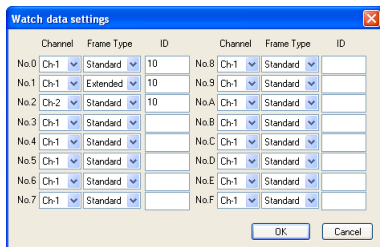
CAN extended format :specify in the range of 0-1FFFFFFFh

● Example Watch Data Display

Set CAN1 standard format ID as "10h" in the No.0.

Set LIN1 extension format ID as "10h" in the No.1.

Set LIN2 ID as "10h" in the No.2.



*Cannot edit or print the watch data display.

*When starting the measurement, only the latest data will be displayed.

*It is not related to the "watch data display" function of analyzer.

Display the Difference of Time Stamp

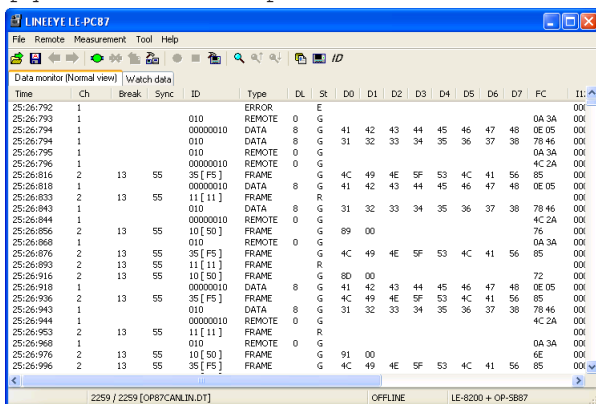
Click [Tool] -> [Difference timestamp] from menu bar. It displays the difference of time stamp compared to the previous time stamp. (CH1/CH2 does not matter) It will go back to the normal mode when clicking [Difference timestamp] one more time.

*It changes the title of "Time" to be "deltaT".

*When having nothing in the previous time stamp, there will be "- : - : - : - : - : - : -".

*Cannot retrieve the difference of time stamp.

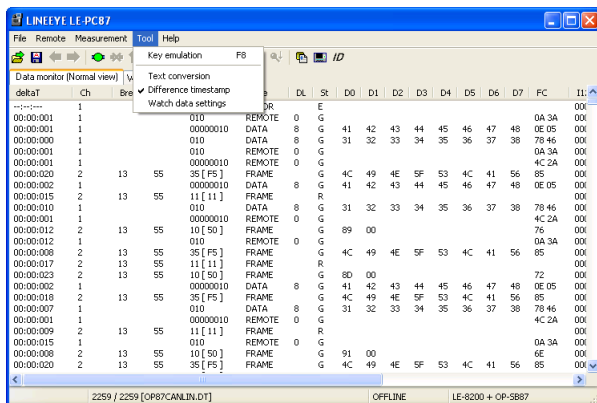
<Display the normal time stamp>



The screenshot shows the LINEEYE LE-PCB7 software interface. The 'Data monitor (Normal view)' window displays a table with columns: Time, Ch, Break, Sync, ID, Type, DL, St, D0, D1, D2, D3, D4, D5, D6, D7, FC, and IL. The data rows show various events such as ERROR, REMOTE, DATA, and FRAME with their corresponding time stamps and channel information.

Time	Ch	Break	Sync	ID	Type	DL	St	D0	D1	D2	D3	D4	D5	D6	D7	FC	IL
25:26:792	1				ERROR	E	G										00
25:26:793	1			010	REMOTE	0	G									0A 3A	00
25:26:794	1			00000010	DATA	8	G	41	42	43	44	45	46	47	48	0E 05	00
25:26:794	1			010	DATA	8	G	31	32	33	34	35	36	37	38	78 46	00
25:26:795	1			010	REMOTE	0	G									0A 3A	00
25:26:796	1			00000010	REMOTE	0	G									4C 2A	00
25:26:816	2	13	55	35 [F5]	FRAME	G	4C	49	4E	5F	53	4C	41	56	85	00	00
25:26:818	1			00000010	DATA	8	G	41	42	43	44	45	46	47	48	0E 05	00
25:26:833	2	13	55	11 [11]	FRAME	R											00
25:26:843	1			010	DATA	8	G	31	32	33	34	35	36	37	38	78 46	00
25:26:844	1			00000010	REMOTE	0	G									4C 2A	00
25:26:856	2	13	55	10 [50]	FRAME	G	89	00								7A	00
25:26:868	1			010	REMOTE	0	G									0A 3A	00
25:26:876	2	13	55	35 [F5]	FRAME	G	4C	49	4E	5F	53	4C	41	56	85	00	00
25:26:893	2	13	55	11 [11]	FRAME	R											00
25:26:916	2	13	55	10 [50]	FRAME	G	8D	00								72	00
25:26:918	1			00000010	DATA	8	G	41	42	43	44	45	46	47	48	0E 05	00
25:26:936	2	13	55	35 [F5]	FRAME	G	4C	49	4E	5F	53	4C	41	56	85	00	00
25:26:943	1			010	DATA	8	G	31	32	33	34	35	36	37	38	78 46	00
25:26:944	1			00000010	REMOTE	0	G									4C 2A	00
25:26:953	2	13	55	11 [11]	FRAME	R											00
25:26:968	1			010	REMOTE	0	G									0A 3A	00
25:26:976	2	13	55	10 [50]	FRAME	G	91	00								6E	00
25:26:996	2	13	55	35 [F5]	FRAME	G	4C	49	4E	5F	53	4C	41	56	85	00	00


<Display the difference of time stamp>



The screenshot shows the LINEEYE LE-PCB7 software interface. The 'Data monitor (Normal view)' window displays a table with columns: deltaT, Ch, Bre, and IL. The data rows show the difference of time stamps for various events. A context menu is open over the 'Difference timestamp' option.

deltaT	Ch	Bre	IL
-----	1		00
00:00:001	1		00
00:00:001	1		00
00:00:000	1		00
00:00:001	1		00
00:00:001	1		00
00:00:020	2	13 55	00
00:00:002	1		00
00:00:015	2	13 55	00
00:00:010	1		00
00:00:001	1		00
00:00:012	2	13 55	00
00:00:012	1		00
00:00:008	2	13 55	00
00:00:017	2	13 55	00
00:00:023	2	13 55	00
00:00:002	1		00
00:00:018	2	13 55	00
00:00:007	1		00
00:00:001	1		00
00:00:009	2	13 55	00
00:00:015	1		00
00:00:008	2	13 55	00
00:00:020	2	13 55	00

Chapter 8 Data Search

To search data, click "  " on the Tool Bar in the Data Window. Set some factors on the data search window.

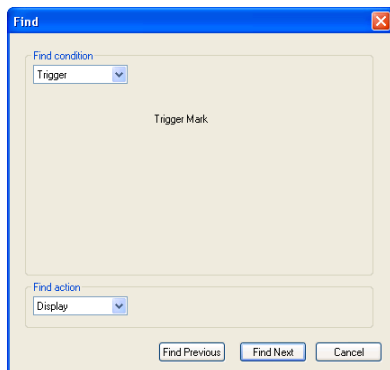
(It cannot search data unless displaying data on the screen.)

FACTOR

There are six factors(Trigger, Error, Data, Remote, Time stamp, External) to search.

◆ Trigger

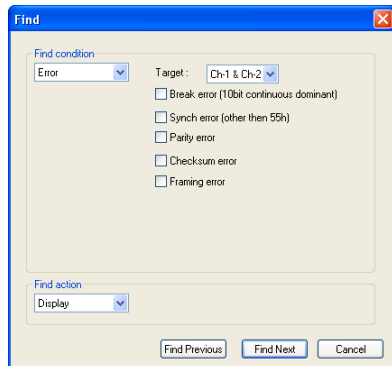
Search the frames of which trigger is generated.



◆ Error

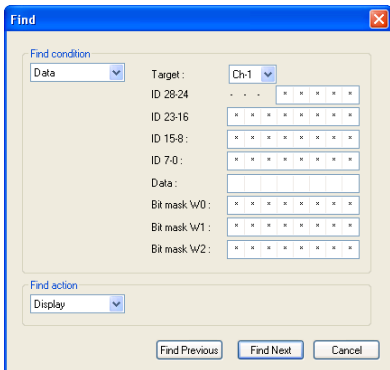
Search Break error (LIN), SYNC error (LIN), Parity error (LIN), Checksum error (CAN/LIN) or Framing error (LIN).

Select the reception channel (Ch1, Ch2, Ch1&Ch2) and error conditions.



◆ Data

Search the specific data frame set in Channel, ID and Data.



◆ "Target"

Select the receiving channel to search, either from Ch1 or Ch2.

◆ "ID28 to ID0"

Set the ID from ID28 to ID0 in bit (0, 1, or don't care(*)).

[CAN] :

Extension format - set the ID from ID28 to ID0.

Standard format - set the ID from ID28 to ID18.

(set "don't care(*)" from ID17 to ID0)

[LIN] :

Set the ID from ID26 to ID21. (set "don't care(*)" from ID20 to ID0)

(It is possible to set the PARITY Bit in ID28(P1) and ID27(P0))

<Examples of the ID setting>

ID00000023 (CAN extension format)

ID 28-24	- - -	0 0 0 0 0
ID 23-16		0 0 0 0 0 0 0 0
ID 15-8		0 0 0 0 0 0 0 0
ID 7-0		0 0 1 0 0 0 1 1

ID023 (CAN standard format)

ID 28-24	- - -	0 0 0 0 0
ID 23-16		1 0 0 0 1 1 * *
ID 15-8		* * * * * * * *
ID 7-0		* * * * * * * *

ID23 (LIN)

ID 28-24	- - -	* * 1 0 0
ID 23-16		0 1 1 * * * * *
ID 15-8		* * * * * * * *
ID 7-0		* * * * * * * *

◆ "DATA"

Input the data to search in the data line (D0 to D7) in HEX.

It is possible to set "don't care (*)" etc.

◆ Bit Mask "W0 to W2"

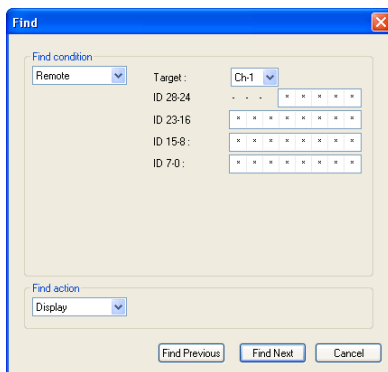
It is possible to set Bit Mask of 1 byte data (W0, W1, W2). To set the Bit Mask, input 0, 1, or "don't care (*)" in the W0, W1, or W2 lines (7 bit to 0 bit from the left). Input W0 to W2 in the data line.

Data :	W0	42							
Bit mask W0 :	*	*	*	*	0	0	0	1	

This example shows that Data D0 searches "01h to F1h", and D1 searches "42h".

◆ Remote

Search the specific CAN remote frame conditions set in Channel and ID.



◆ Target

Select the receiving channel (Ch1, Ch2 or Ch1 &2).

◆ ID28- 0

Set the ID from ID28 to ID0 in bit (0, 1, or don't care(*)).

Extension format - set the ID from ID28 to ID0.

Standard format - set the ID from ID28 to ID18.

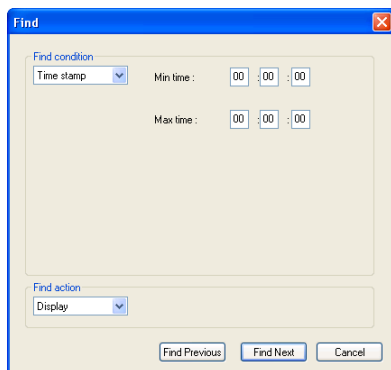
(set "don't care(*)" from ID17 to ID0)

◆ Time stamp

Search the time stamps between "Min time" and "Max time". The unit of time stamp should be "MS1ms" in the "Time stamp" setting.

Example: Min time"52:27:50", Max time"52:27:51"

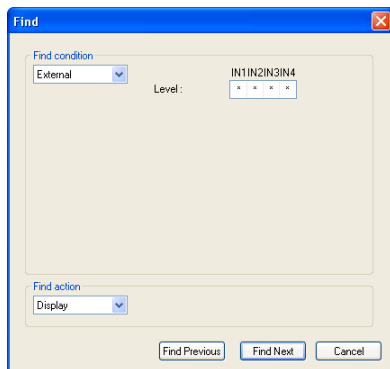
Target range is from 52:27:500 until 52:27:519.



◆ External

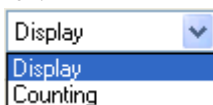
Search the level(0=Low, 1=High) in the external input (IN1 -4).

It is possible to set the don't care(*).



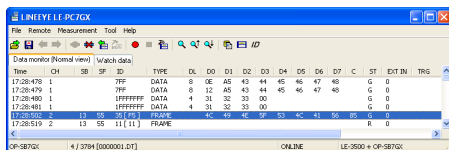
ACTION

There are two action types, "Display" and "Counting" to display the result of search.



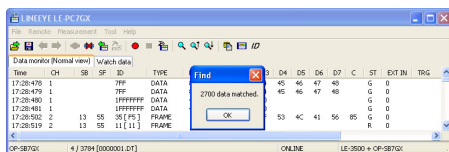
◆ Display

Display the data that matches the search conditions. When it finds the matched frames, the first frame will be highlighted.





◆ Counting

Display the number of data that matches the search conditions. When it finds the matched frames, the number of frames will be displayed. (The data which is highlighted will not be included.)



Start Data Search

1. Select one factor from Trigger, Error, Data, Remote, Time stamp or External to search.
2. Set the search conditions.
3. Select the action either from "Display" or "Counting".
4. Click [Find Previous] or [Find Next].
5. To search continuously, click  " (Find next) or  " (Previous) on the Tool Bar.



Only one factor selected from Trigger, Error, Data, Remote, Time stamp or External will be searched. (Not "AND" condition)

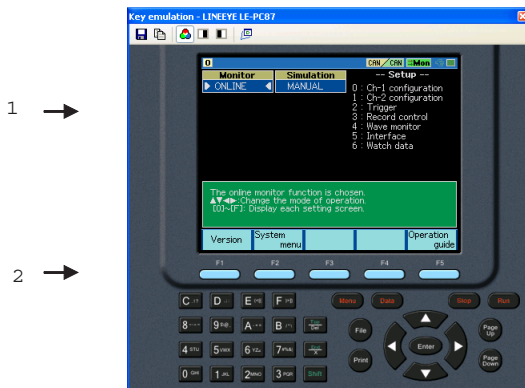
When finishing the application, the search conditions will be cleared.

Chapter 9 Key Emulation

It is possible to operate the analyzer by remote control from a far place from the analyzer.

Explanation of Key Emulation

Click "  " on the Tool Bar in the Data Window (or [Remote] -> [Connect] from menu bar) to make the analyzer On-Line. And then click "  " (or [Tool] -> [Key emulation] from menu bar).









1. Display the screen of analyzer which is connecting.
2. Emulate keys of the analyzer.

*It cannot operate "Key emulation" without connecting to the analyzer.

Save the Screen Image

It is possible to save the screen image of analyzer in bitmap(BMP) file format.

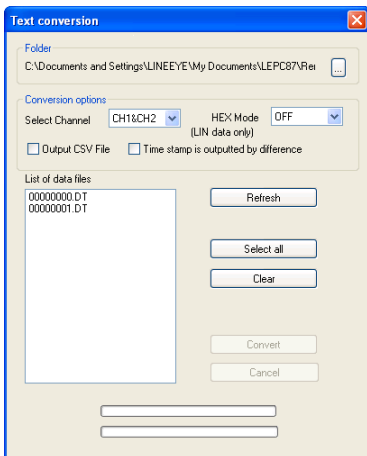
Button	Meaning
	Saves the present screen display in bitmap file.
	Copies the present screen display on the Clipboard.
	Makes a bitmap file in monochrome.
	Change the monochrome, black ->white, white ->black.
	Makes a bitmap file in color.
	Activates the main window.

Chapter 10 Text Conversion

The data saved on a memory card or HDD can be converted into text format.

Explanation of Text Conversion

Click "  " on the Tool Bar in the Data Window (or [Tool] -> [Text conversion] from menu bar).



- "Folder"
 - Select a folder which has the data to convert into text format.
- "Conversion options"
 - Select options for text conversion.
 - ♦ Select Channel
 - Select a channel from CH1, CH2 or CH1&CH2.
 - ♦ HEX Mode
 - This is only for LIN data.
 - OFF :Does not include parity bit of ID.
 - Display the framing error data as "##".
 - ON :Display ID including parity bit in HEX.
 - Display the framing error data in HEX.
 - + Output CSV file (*1)
 - Mark this box when outputting the file in CSV format.
 - + Output the difference of time stamp
 - Mark this box when outputting the difference of time stamp. When outputting the file in CSV format, it will output the difference of time stamp everytime.

- "List of data files"
Select a file to perform the text conversion. When clicking the file, it will be selected. When clicking the file one more time, the selection will be cleared. (It is possible to select the multiple files.)
- "Refresh"
Update the list of data files.
- "Select all"
Select all files displayed in the list of data files.
- "Clear"
Clear all files selected in the list of data files.
- "Convert"
Selected data files will be converted into text format.
- "Cancel"
Cancel text conversion.

Start Text Conversion

1. Select a folder which has data to convert into text format.
2. Set the conversion options.
3. Select a file to convert from the list of data files.
4. Click "Convert".

After the text conversion, data will be saved in the same file as before, and the file name will be the same name plus ".txt" at the end.

If marking the "Output CSV file" box, the file name will be the same name plus ".csv" at the end.

Chapter 11 Specifications

Applicable Analyzer	LE-8200 with OP-SB87.	
Connection	Serial, LAN (LAN-serial converter(SI-60F/SI-60)), USB	
Number of analyzers	Connect only one analyzer and have remote control function.	
Measurement conditions	Measurement conditions (communication parameters, triggers and simulation data)	
Key Emulation	Displays the screen and keys of the analyzer on the PC.	
Remote monitor	Recording mode	Fixed buffer mode: Measures data up to the specified size and stop automatically.
	Recording capacity	Max. 16GB: Can be specified up to 2,000 files in the unit of 1/2/4/8 MB.
Display	Standard display	Time stamp, (Difference of time stamp), CAN/LIN frame display (SynchBreak (*1), SynchField (*1), ID, TYPE, DLC, STATUS, DATA0-7, Checksum/CRC), External in(Analog, Digital), TRIGGER point
	Watch data display	Time stamp, CAN/LIN frame display (SynchBreak(*1), SynchField(*1), ID, TYPE, DLC, DATA0-7, Checksum/CRC, External in(Analog, Digital)
Search Function	Displays the data or number of data that matches the search	
	Searching Conditions	Trigger: Trigger matching frame Error: Break, Sync, Parity, Checksum, Framing Data: Specified ID (don't care(*) can be set) Character string (up to 8 character, don't care(*), bit mask can be set) Remote: Specified ID (don't care(*) can be set) Time stamp: specific time stamp: between min and max time. External : Logical status of external signal (IN1 -4)
Text Conversion	Converts the recorded files into text format or CSV format.	
Save the Screen Images	Saves the screen image of analyzer displaying by Key emulation function in bitmap file.	
System Requirements	PC	RAM: 512MB(1GB for Vista) or more (recommended) HDD: 3MB+free space for saving the measurement data.
	OS	Windows 2000/XP/Vista/7
Accessories	CD (software), Instruction manual, Warranty	

*1: LIN frame only.

The card packed with the product is the user registration card for Japanese customers. For overseas customers, there is a registration page on our web site. (www.lineeye.com)

LINEEYE CO., LTD.

- Head Office/Sales Office

: Marufuku Bldg. 5F, 39-1Karahashi Nishihiragaki-cho, Minami-ku,
Kyoto, 601-8468 Japan

Phone: 81-75-693-0161 Fax: 81-75-693-0163

- Technical Center

: 8-49 Koen-cho, Nagahama, Shiga, 526-0065 Japan

Phone: 81-749-63-7762 Fax: 81-749-63-4489

URL: <http://www.lineeye.com>

This instruction manual is used recycled paper.