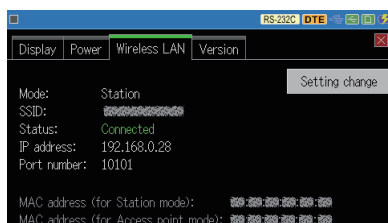


< How to use the LE file downloader >

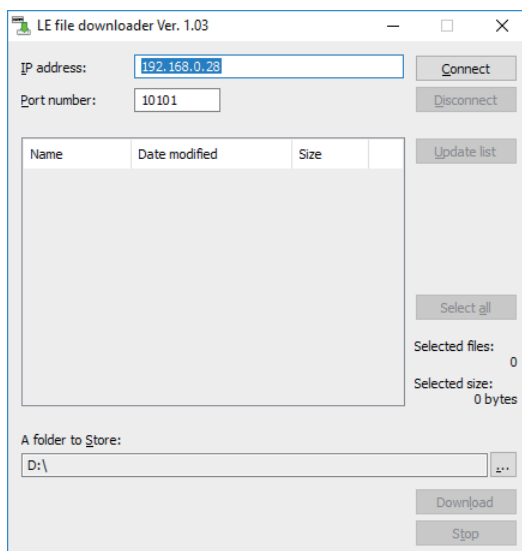
Using a PC software "LE file downloader" and the auto-save function of analyzer you can download to your PC via Wi-Fi the measurement log file (#XXXXXXXX.DT) saved in the SD card or USB memory.

When any problem happens, you can take and check the log file of the time when it happened from the analyzer installed on the site without stopping the auto-saving of the analyzer.

- 1) Download the lefiledownload.exe from LINEEYE website to your PC.
There is no need of install.
- 2) Configure the analyzer and PC to connect them via Wi-Fi and then start the measurement with auto-save function.
Wi-Fi settings of the analyzer are set in the wireless LAN setting tab (LE-3500XR/LE-2500XR) of system settings and remote conditions ([MENU], [3], [3]). Please refer to the manual of analyzer for the detail.



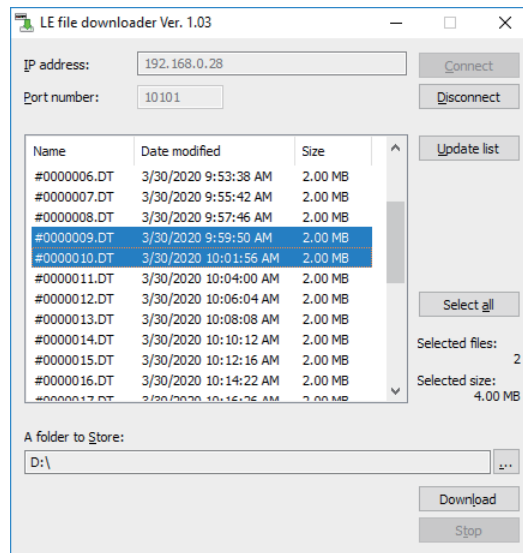
- 3) Double-click lefiledownload.exe to run it.
- 4) Input the IP address and port number of analyzer.



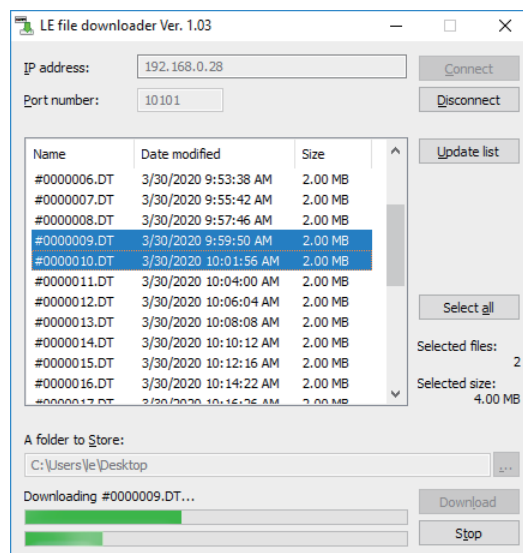
* The IP address on the display is an example. Input the IP address allotted to the analyzer depending on the network environment. The port number on the display is the default value of the analyzer.

- 5) Click [Connect] to list the log files in the list window.
Click [Update list] to update the list window to the latest condition.

- 6) Check the time stamp etc. to find the file you want and click to select the file to be downloaded.



- 7) Confirm the directory where the file to be downloaded and change it by clicking [...] if you need.
- 8) Click [Download] to start the data transmission via Wi-Fi.



- ☰ Transmission of 16MB data will take about 2 minutes.

If you download it while measurement, depending on the communication speed of the measurement and radio condition it may take more time. Please note it when you download many files.

It saves one by one to the specified directory.

- 9) Read the log file by a PC link software "LE-PC300R" for your analysis.