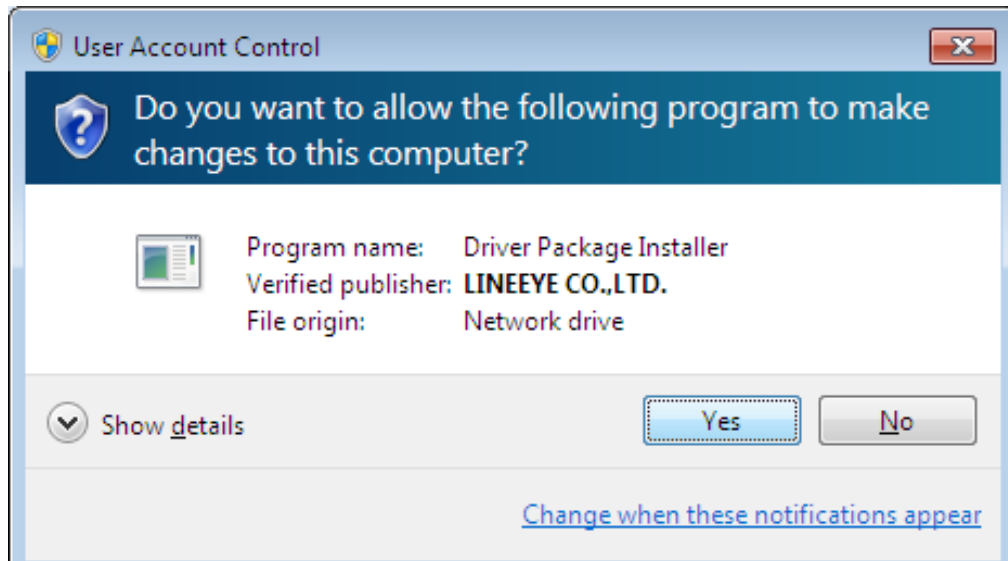
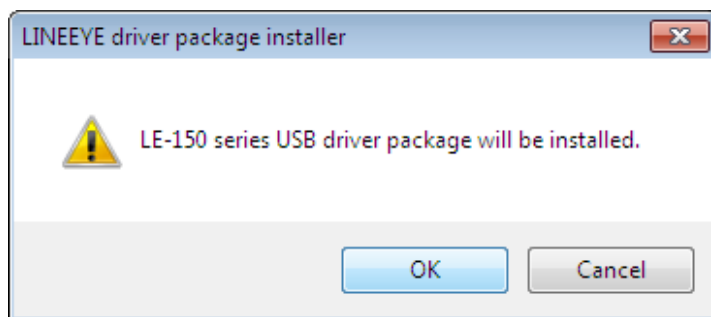


LE-150P, Installation of Driver for Windows7 (32/64 bit version)

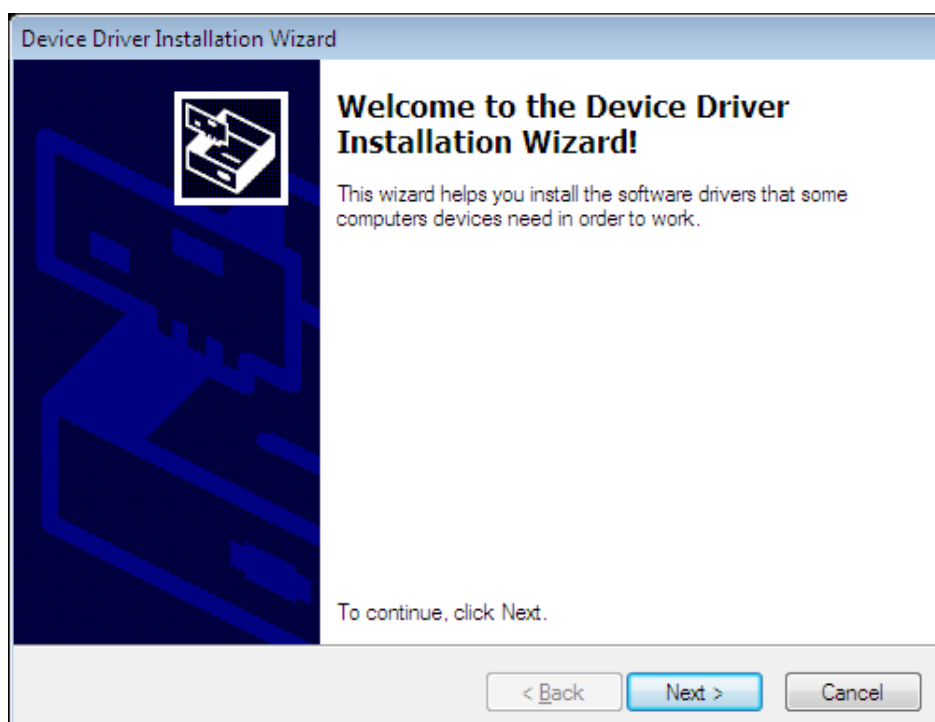
- 1) Defrost the downloaded file to the appropriate folder.
- 2) Click "setup.exe" in the folder of "/LE150driver/nt" in the CD-ROM.
Following dialog box will be appeared "Click Yes".



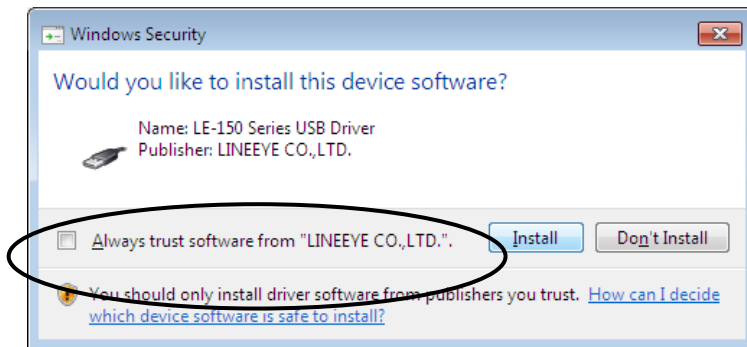
- 3) Click "OK" to start installing the driver package.



- 4) Click "Next" to start the set up wizard.

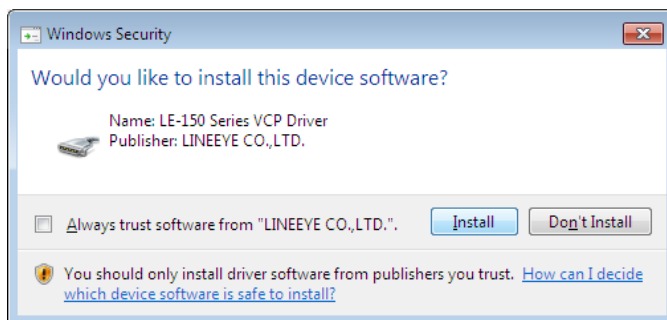


- 5) Click "Install" and install the first driver.

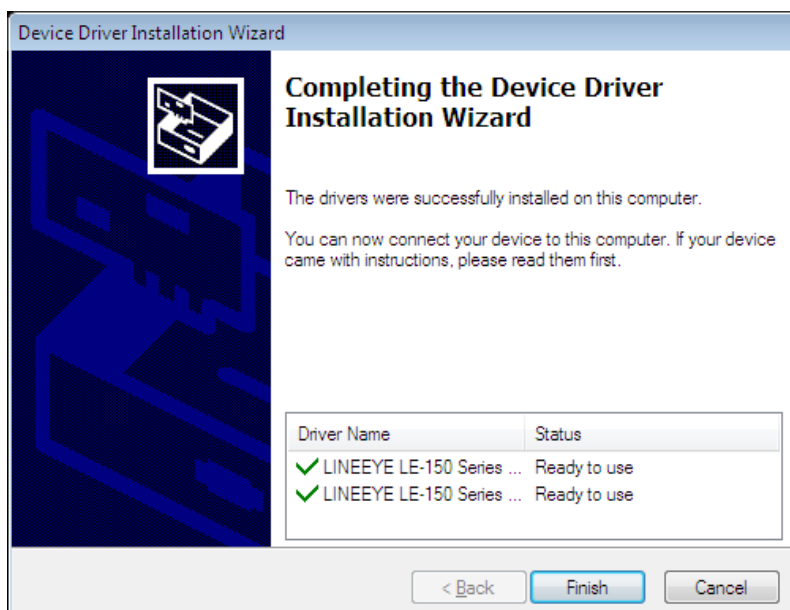


If marking on the box of "Always installing the software of LINEEYE", this dialog will not be appeared again.

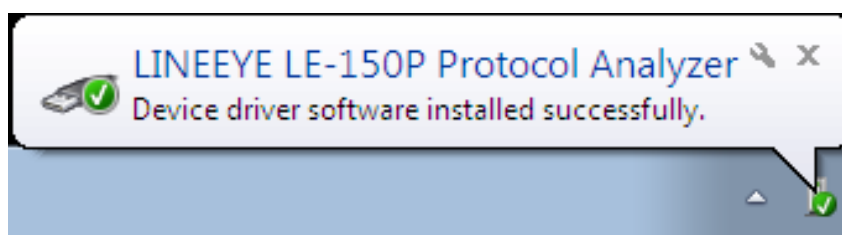
- 6) Click "Install" and install the second driver.



- 7) Click "Complete" and finish installation of driver package.



- 8) Connect LE-150P. If it is recognized, following message will be appeared..



End of the installation.